

**INSIGHT**

VISION. PASSION. DEDICATION

CHINA'S LEADING FITNESS  
EQUIPMENT INNOVATOR AND MANUFACTURER

**INSIGHT**

- / RAPID RESPONSE
- / ON-DEMAND CUSTOMIZATION
- / FLEXIBLE MANUFACTURING



INSIGHT





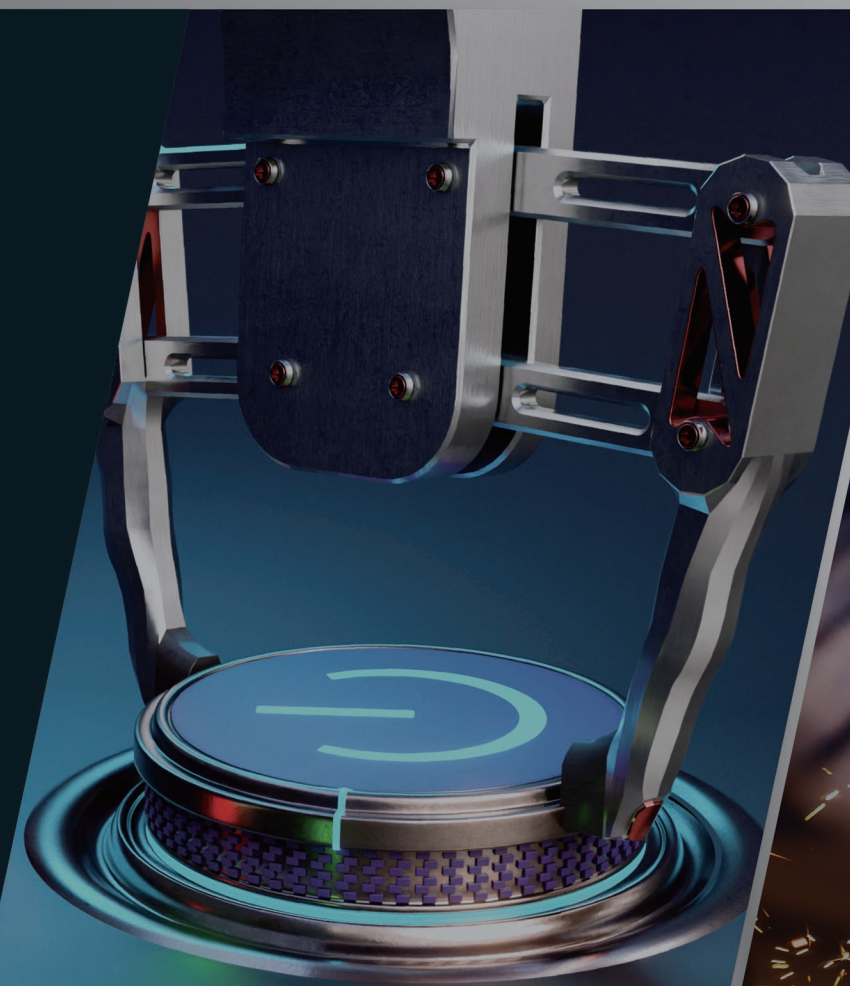
## CHINA'S LEADING FITNESS EQUIPMENT INNOVATOR AND MANUFACTURER

Founded in 2014 and headquartered in the picturesque coastal city of Qingdao, Shandong Province, China, Insight Fitness is a pioneer in fitness equipment innovation and manufacturing. Our firm commitment to delivering customized OEM/ODM solutions has propelled Insight into the ranks of an internationally recognized, diversified manufacturing powerhouse, marking nearly a decade of unwavering dedication.

Insight's research and development wing, consisting of over 50 seasoned professionals, exceeds industry benchmarks. Working with a workforce of over 600 skilled industrial artisans, we have meticulously cultivated a robust, flexible manufacturing capability capable of handling small-batch, high-frequency, multi-variety production and a myriad of product lines. This capability has fostered robust alliances with over 90 partners in 50 countries, solidifying our status as the preferred partner for emerging brands and the trusted choice for established brands in the global marketplace.

Experience a decade of dedication and excellence with Insight Fitness, where innovation and manufacturing converge to shape the future of fitness equipment.

**INSIGHT**



**RAPID  
RESPONSE**



**ON-DEMAND  
CUSTOMIZATION**



**FLEXIBLE  
MANUFACTURING**



TREADMILLS

Designed for health and performance, Insight treadmills feature advanced technology and superior craftsmanship for an effective and comfortable workout. Equipped with high-quality, silent motors, they ensure energy-efficient and quiet operation. The smooth lift mechanism and shock-absorbing running boards provide stability and knee protection. The robust frame design enhances safety, and with a variety of touchscreen and LED display, these treadmills can be customized to meet individual preferences.



Equipment model	RT-8	RT-7
Display window	23.8-inch LCD high resolution capacitive touch screen	18.5-inch LCD high resolution capacitive touch screen
Audio playback	Two hi-fi speakers external/headphone jack	headphone jack
Charging function	Wireless charging /USB charging	USB charging
Nominal power	AC 3HP (peak 7HP)	AC 3HP (peak 7HP)
Slope range	0-18%	0-15%
Velocity range	0.6-22km/h	1-20km/h
Current requirement	10A	10A
Supply voltage	200-240V	200-240V
Running area	590×1550 (mm)	590×1550 (mm)
Plate thickness	25mm	25mm
Strip thickness	2.3mm	2.3mm
Heart rate monitoring	Hand heart rate/wireless heart rate	Hand heart rate/wireless heart rate
Shortcut key	Slope, speed direct selection	Slope, speed direct selection
Program control	19 preset programs and face recognition	4 preset programs
Maximum bearing capacity	200kg	200kg
Weight of equipment	210kg	210kg
Overall size	2109*953*1553 (mm)	2109*953*1566 (mm)

# RT-8 TREADMILL



Intuitive LCD capacitive touch screen with one touch speed and tilt buttons



Continuous multi-grip for the runner a variety of hand positions are available



The breathing lights under the armrests are different the he color indicates the status of the treadmill

# RT-7 TREADMILL



Intuitive LCD capacitive touch screen with one touch speed and tilt buttons



A-Zone controls allow runners make quick and easy choices



2.3mm thick diamond patterned running strap for more comfortable running



RT-5 TREADMILL



Equipment model	RT-5
Display window	6LED window+40 * 16 dot matrix display screen
Audio playback	-
Charging function	USB charging
Nominal power	AC 3HP (peak 7HP)
Slope range	0-15%
Velocity range	1-20km/h
Current requirement	10A
Supply voltage	200-240V
Running area	590×1550 (mm)
Plate thickness	25mm
Strip thickness	2.3mm
Heart rate monitoring	Hand heart rate/wireless heart rate
Shortcut key	Slope, speed direct selection
Program control	9 preset programs
Maximum bearing capacity	200kg
Weight of equipment	210kg
Overall size	2109*953*1566 (mm)



Intuitive LED button touch screen with one click speed and tilt buttons



A-Zone controls allow runners make quick and easy choices



2.3mm thick diamond patterned running strap for more comfortable running

CT-3000 TREADMILL



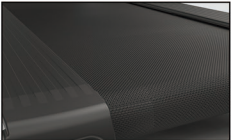
Equipment model	CT-3000
Display window	6LED window+40 * 16 dot matrix display screen
Audio playback	-
Charging function	-
Nominal power	AC 3HP (peak 7HP)
Slope range	0-15%
Velocity range	1-20km/h
Current requirement	10A
Supply voltage	200-240V
Running area	600×1550 (mm)
Plate thickness	25mm
Strip thickness	2.3mm
Heart rate monitoring	Hand heart rate/wireless heart rate
Shortcut key	Slope, speed direct selection
Program control	9 preset programs
Maximum bearing capacity	200kg
Weight of equipment	190kg
Overall size	2175*930*1600 (mm)



Intuitive LED button touch screen with one click speed and tilt buttons



A-Zone controls allow runners make quick and easy choices



2.3mm thick diamond patterned running strap for more comfortable running



CT70 TREADMILL



Dimensions (L × W × H)	2177mm×938mm×1607mm
Packaging Dimensions	2200mm×960mm×503mm
Gross Weight / Net Weight	248/190kg
Maximum User Weight	180kg
Motor Power	rated power 3HP, maximum peak power: 7HP
Output Voltage	AC220V, 50Hz
Screen Type	21.5"/23.8" LCD display
Screen Material	LCD
Display Information	Time, Distance, Steps, Calories, Speed, Incline, Heart rate, Program modes, Fault diagnosis
Speed Range	0-20km/h
Speed Levels	3、6、9km/h
Incline Range	0-15%
Incline Levels	4%、8%、12%
Running Belt Thickness	2.5mm
Running Area Size	570*1550mm
Running Board Thickness	25mm
Running Deck Height	250mm
Quick Access Keys	Speed adjustment, incline adjustment
Training Modes	Quick start, program modes (10 preset training programs), Target Mode
Emergency Stop Switch Style	Pull-cord type
Safety Key	Yes
Energy-Saving Function	Motion sensor with auto-standby
Charging Function	Wireless charging
Wireless screen casting	Supports multi-system screen casting
Knob control	1.6-inch Color TFT Rotary Control for Intuitive Operation
Cup Holder	Yes
Phone Holder	Yes
Fan	Yes
Bluetooth	Yes
WIFI	Yes

CT50 TREADMILL



Dimensions (L × W × H)	2177mm×938mm×1607mm
Packaging Dimensions	2200mm×960mm×503mm
Gross Weight / Net Weight	248/190kg
Maximum User Weight	180kg
Motor Power	rated power 3HP, maximum peak power: 7HP
Output Voltage	AC220V, 50Hz
Screen Type	15.6-inch LED Console with High-Brightness Acrylic Panel
Screen Material	Acrylic
Dot Matrix Window	5 LED windows + 16×8 dot matrix
Display Information	Time, Distance, Steps, Calories, Speed, Incline, Heart rate, Program modes, Fault diagnosis
Speed Range	0-20km/h
Speed Levels	3、6、9km/h
Incline Range	0-15%
Incline Levels	4%、8%、12%
Running Belt Thickness	2.5mm
Running Area Size	570*1550mm
Running Board Thickness	25mm
Running Deck Height	250mm
Quick Access Keys	Speed adjustment, incline adjustment
Training Modes	Quick start, program modes (7 preset training programs)
Emergency Stop Switch Style	Pull-cord type
Safety Key	Yes
Energy-Saving Function	Motion sensor with auto-standby
Charging Function	Wireless charging
Cup Holder	Yes
Phone Holder	Yes
Fan	Yes
Bluetooth	Optional
WIFI	Optional





**ADDRESS** NO.106 ZHAOJIALING VILLAGE, TONGJI OFFICE,JIMO, QINGDAO, CHINA  
**TEL** + 86 [0]532 88970106  
**WEB** WWW.INSIGHTFITS.COM  
**E-MAIL** SALES@INSIGHTFITS.COM

**CHINA'S LEADING FITNESS EQUIPMENT  
INNOVATOR AND MANUFACTURER**

Version No. 250911