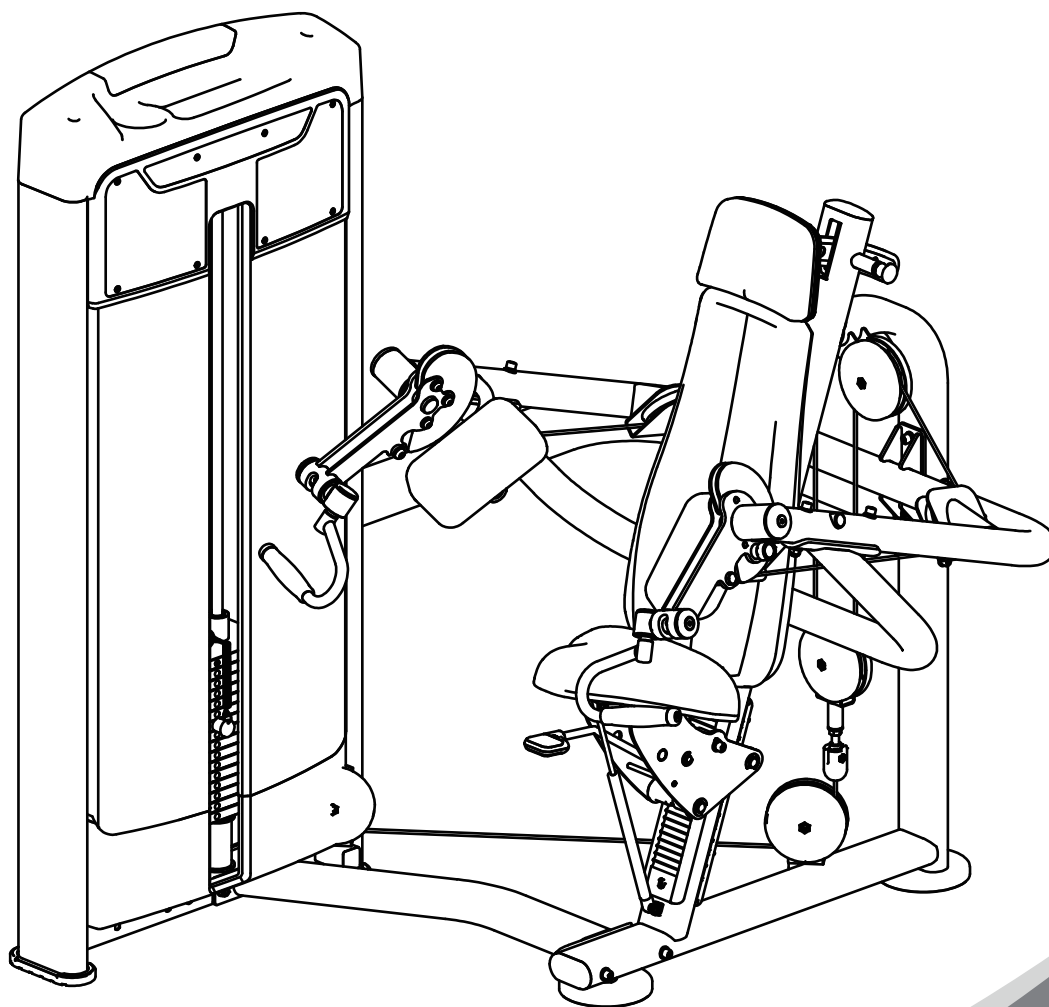


RE8031

SEATED BICEPS CURL

OWNER'S MANUAL



! CAUTION

Read all precautions
and instructions in this manual
before using this equipment

Read all precautions and instructions in this manual before using this equipment.

Table Of Contents

Important Safety Instructions----- 3

Instructions----- 4

Parts List----- 5

Exploded View----- 6

Measurement Guide----- 8

Assembly Instructions----- 9

Assembly----- 10

Maintenance Schedule----- 17

General Maintenance Information----- 18

Weight Training Tips----- 19

Important Safety Instructions

Before beginning any fitness program, you should obtain a complete physical examination from your physician. When using exercise equipment, basic precautions should always be taken, including the following:

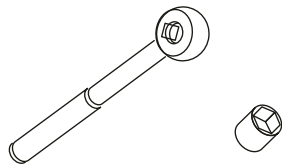
1. Read all instructions before using the equipment.
These instructions are written to ensure your safety and to protect the unit.
2. Use the equipment only for its intended purpose as described in this guide.
Do not use accessory attachments that are not recommended by the manufacturer: such attachments might cause injuries.
3. The product should only be used on a level surface and is with 0.5 meters space around the product.
Do not use the equipment outdoors.
4. Do not allow children on or near the equipment. And children are not allowed to use this equipment.
Teenagers should use this equipment with adult supervision.
5. Do not overexert yourself or work to exhaustion.
Do not attempt to lift more weight than you can control safely.
If you feel any pain or abnormal symptoms, stop your workout immediately and consult your physician.
6. This equipment is not used as medical apparatus and instruments.
7. Never operate the unit when it has been dropped or damaged.
Never drop or insert anything into any opening in the equipment.
Always check the unit and its cables before each use. Make sure that all fasteners and cables are secure and in good working condition.
Frayed or worn cables can be dangerous and may cause injury. Periodically check these cables for any indication of wear.
Keep hands, limbs, loose clothing and long hair well out of the way of moving parts.
8. Be careful when getting on or off the equipment.
9. Wear proper exercise clothing and shoes for your workout, no loose clothing.

Instructions

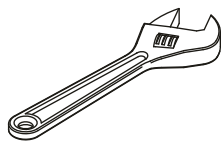
Before beginning assembly please take the time to read instructions thoroughly. Please use the various lists in this manual to make sure that all parts have been included in your shipment. When ordering, use part number and description from the lists. Use only our replacement part when servicing. Failure to do so will void your warranty and could result in personal injury.

The equipment is designed to provide the smoothest, most effective exercise motion possible. After assembly, you should check all functions to ensure correct operation. If you experience problems, first recheck the assembly instructions to locate any possible errors made during assembly. If you are unable to correct the problem, call your authorized dealer. Be sure to have your serial number and this manual when calling. When all parts have been accounted for, continue on.

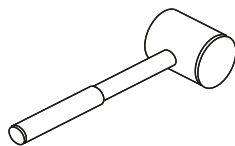
Tools Required



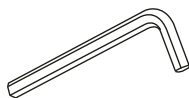
Ratchet Wrench and Socket



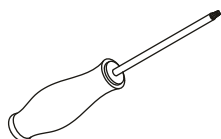
Adjustable Wrench



Rubber Mallet



Hex Key Wrench Set



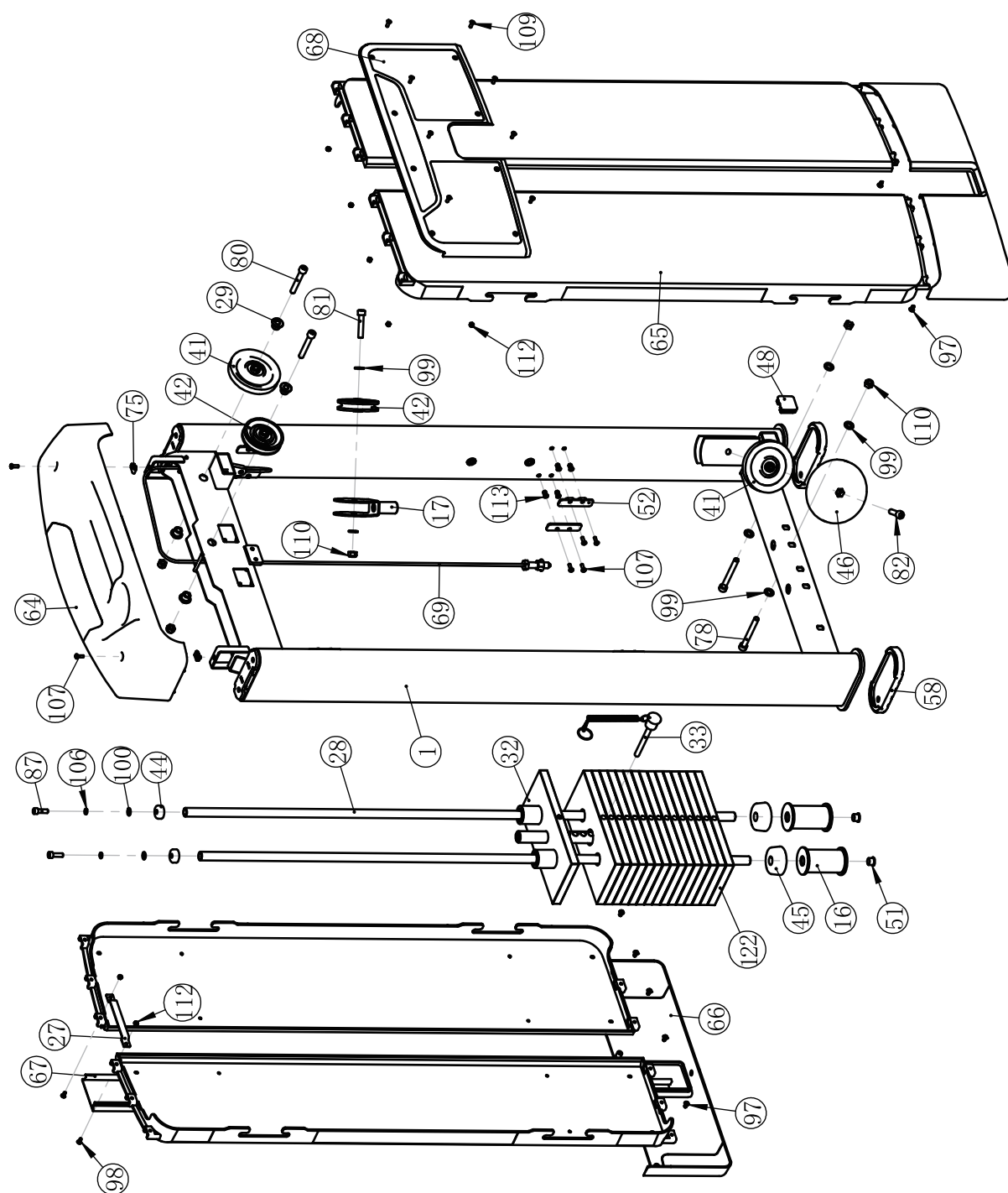
Phillips Screwdriver

Parts List

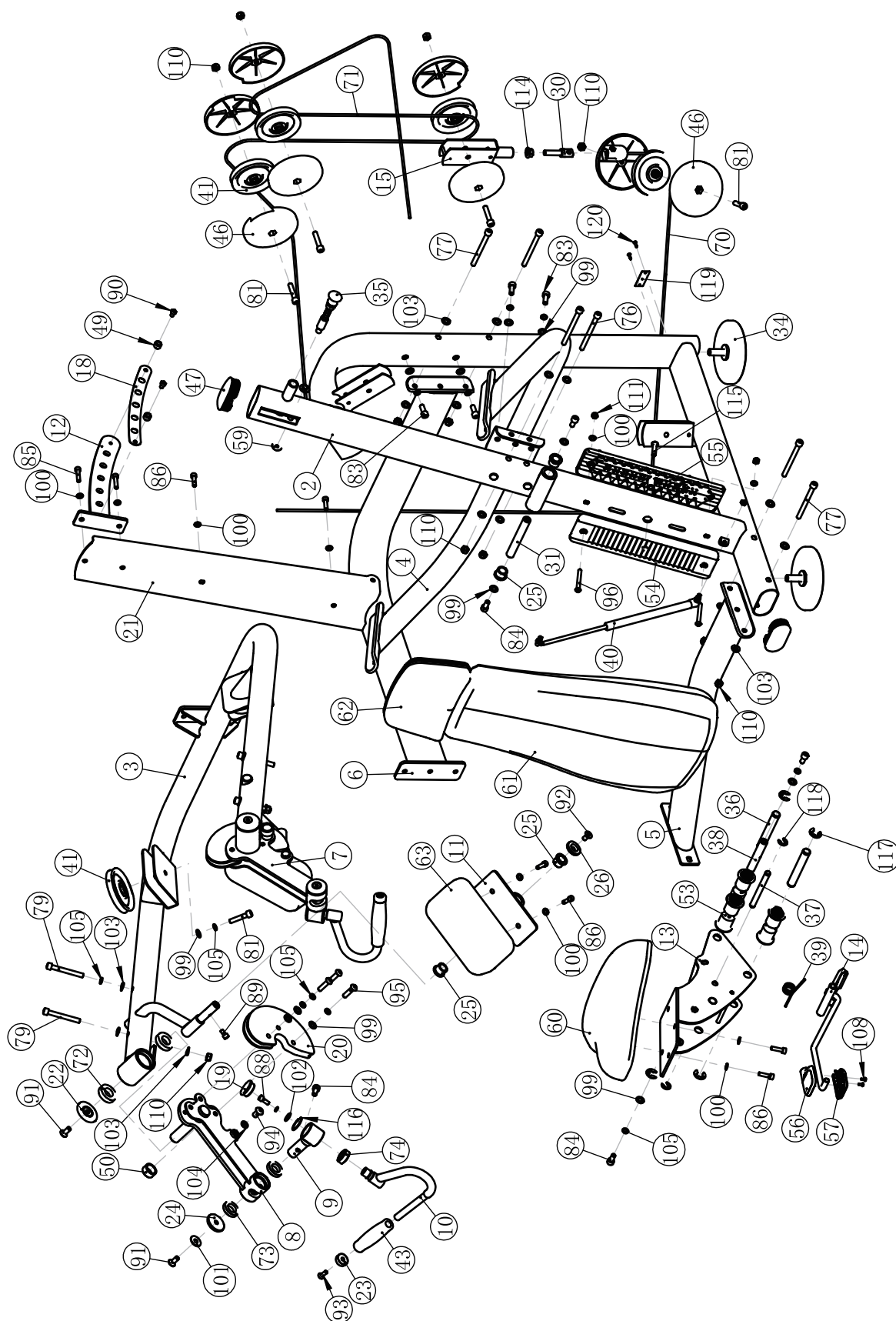
NOTE: SOME OF THESE PARTS MAY COME PRE-INSTALLED.

Item No	Description	QTY	Item No	Description	QTY
1	Weight Stack Frame	1	62	Headrest	1
2	Main Frame	1	63	Shoulder Pad	2
3	Arm Strength Frame	1	64	Upper Shroud	1
4	Arm strength Support Bracket	1	65	Side Shroud	4
5	Ground Connection Frame	1	66	Under Shroud	2
6	Rear Connection Frame	1	67	Back Buckle	1
7	Left Swing Arm Frame	1	68	Front Cover	1
8	Right Swing Arm Frame	1	69	Cable Assembly 1	1
9	Rotating Frame	2	70	Cable Assembly 2	1
10	The Handle Frame	2	71	Cable Assembly 3	1
11	Elbow Pad Rack	2	72	Bearing 6005-2Z	4
12	Back Cushion Adjustment Frame	1	73	Bearing 61905-2Z	4
13	Seat Cushion Frame	1	74	Radial spherical plain bearing	2
14	Pull Rod Component	1	75	Stretch Splint	2
15	Swing Pulley Frame	1	76	Socket Head Cap Screw M10*125	2
16	Transfer Elevated	2	77	Socket Head Cap Screw M10*120	4
17	Moving Pulley Frame	1	78	Socket Head Cap Screw M10*90	2
18	Adjust the Lining Plate	1	79	Socket Head Cap Screw M10*85	4
19	T-shaped Plug	2	80	Socket Head Cap Screw M10*70	2
20	Rope Wheel Disc	2	81	Socket Head Cap Screw M10*50	7
21	Back Pad Fixing Plate	1	82	Socket Head Cap Screw M10*45	1
22	Aluminum End Cap	2	83	Socket Head Cap Screw M10*25	6
23	Aluminum End Cap	2	84	Socket Head Cap Screw M10*20	6
24	Shaft End Cover	2	85	Socket Head Cap Screw M8*35	2
25	Flange Shaft Sleeve	6	86	Socket Head Cap Screw M8*30	8
26	End Cap	2	87	Socket Head Cap Screw M8*25	2
27	Connecting Plate	1	88	Socket Head Cap Screw M8*20	2
28	Guide Rod $\phi 19 \times 2.0 \times 1519$	2	89	Socket Head Cap Screw M8*15	2
29	Pulley Sleeve	4	90	Socket Head Cap Screw M8*12	2
30	Steel Cable Connecting Shaft	1	91	Flat Head Cap Screw M10*25	4
31	Cushion Pivot Shaft	1	92	Flat Head Cap Screw M10*20	2
32	Heavy Iron Assembly	1	93	Flat Head Cap Screw M8*25	2
33	Selector Pin W/Coil	1	94	Button Head Cap Screw M12*20	2
34	Floor Stand	2	95	Button Head Cap Screw M10*40	6
35	Elastic Pin Component	1	96	Button Head Cap Screw M8*70	2
36	Rotation Shaft	2	97	Button Head Cap Screw M6*10	12
37	Joystick Shaft	1	98	Button Head Cap Screw M5*10	2
38	Central Axis	1	99	Flat Washer $\phi 11 \times \phi 20 \times 2$	30
39	Torsional Spring	1	100	Flat Washer $\phi 9 \times \phi 16 \times 1.6$	14
40	Gas Spring Component	1	101	Flat Washer $\phi 11 \times \phi 30 \times 2$	2
41	Pulley	8	102	Flat Washer $\phi 9 \times \phi 22 \times 2$	2
42	Pulley	2	103	Arc Washer $\phi 10$	14
43	Handle Bar Gloves	2	104	Spring Washer $\phi 12$	2
44	Mount Sleeve	2	105	Spring Washer $\phi 10$	18
45	Rubber Bumper	2	106	Spring Washer $\phi 8$	4
46	Pulley Cover	9	107	Button Head Cap Screw M5*15	18
47	Tube Plug PT50*100	2	108	Button Head Cap Screw M4*10	2
48	Tube Plug F38	1	109	Flat Head Philips Screw M5*15	8
49	Stop Collar	2	110	Nylon Lock Nut M10	17
50	Stop Collar	2	111	Nylon Lock Nut M8	4
51	Rubber Plug $\phi 18.5 \times \phi 15 \times 7$	2	112	Nylon Lock Nut M5	10
52	Shroud Clip	8	113	Flat Hex Nut M5	16
53	Long Roller Component	3	114	Hexagon Flange Nut M12	1
54	Seat Cushion Inner Slide Rail	1	115	Button Head Cap Screw 3/8"-16*38	1
55	Seat Cushion Outer Slide Rail	1	116	Elastic Retaining Ring for Holes $\phi 35$	2
56	Handle Cover Component	1	117	Split Washer $\phi 15$	4
57	Lower Cover of Handle	1	118	Split Washer $\phi 12$	2
58	Rubber Foot	2	119	Nameplate	1
59	Sliding Pad	2	120	Rivets	2
60	Seat Cushion	1	121	Lube Oil Box	1
61	Cushion	1	122	Weight Plate	15

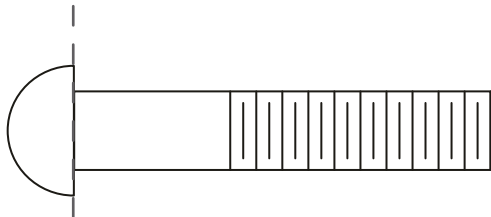
Exploded View



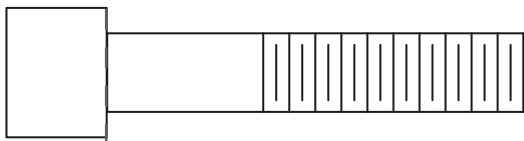
Exploded View



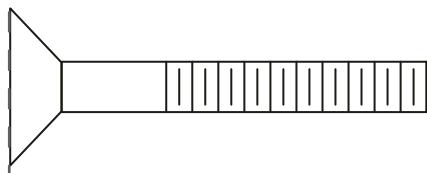
Measurement Guide



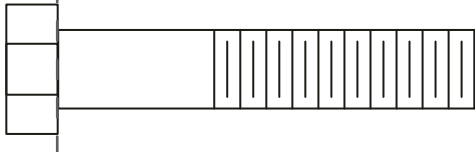
BHCS = Button Head Cap Screw



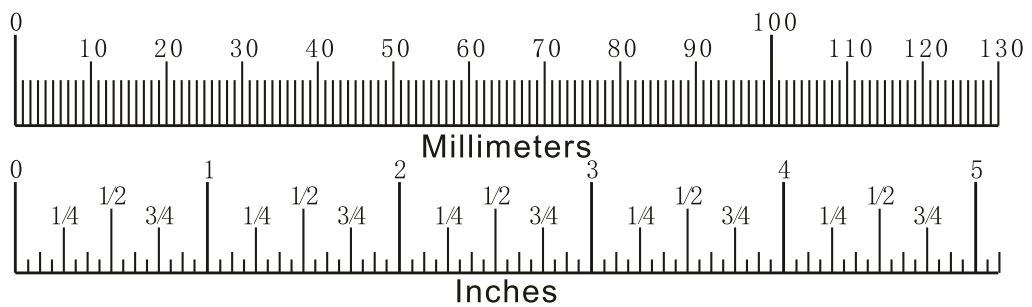
SHCS = Socket Head Cap Screw



FHCS = Flat Head Cap Screw



HHB = Hex Head Bolt



Assembly Instructions

Assembly of the equipment takes professional installers about 2 hours. If this is the first time you have assembled this type of equipment, plan to spend more time. It is strongly recommended to assemble the equipment by professional installers. You may find it quicker, safer, easier to assemble this equipment with the help of a friend, as some of components may be large, heavy or awkward to handle alone. It is important that you assemble your product in a clean, clear, uncluttered area. This will enable you to move around the product while you are fitting components and reduce the possibility of injury during assembly.

NOTE

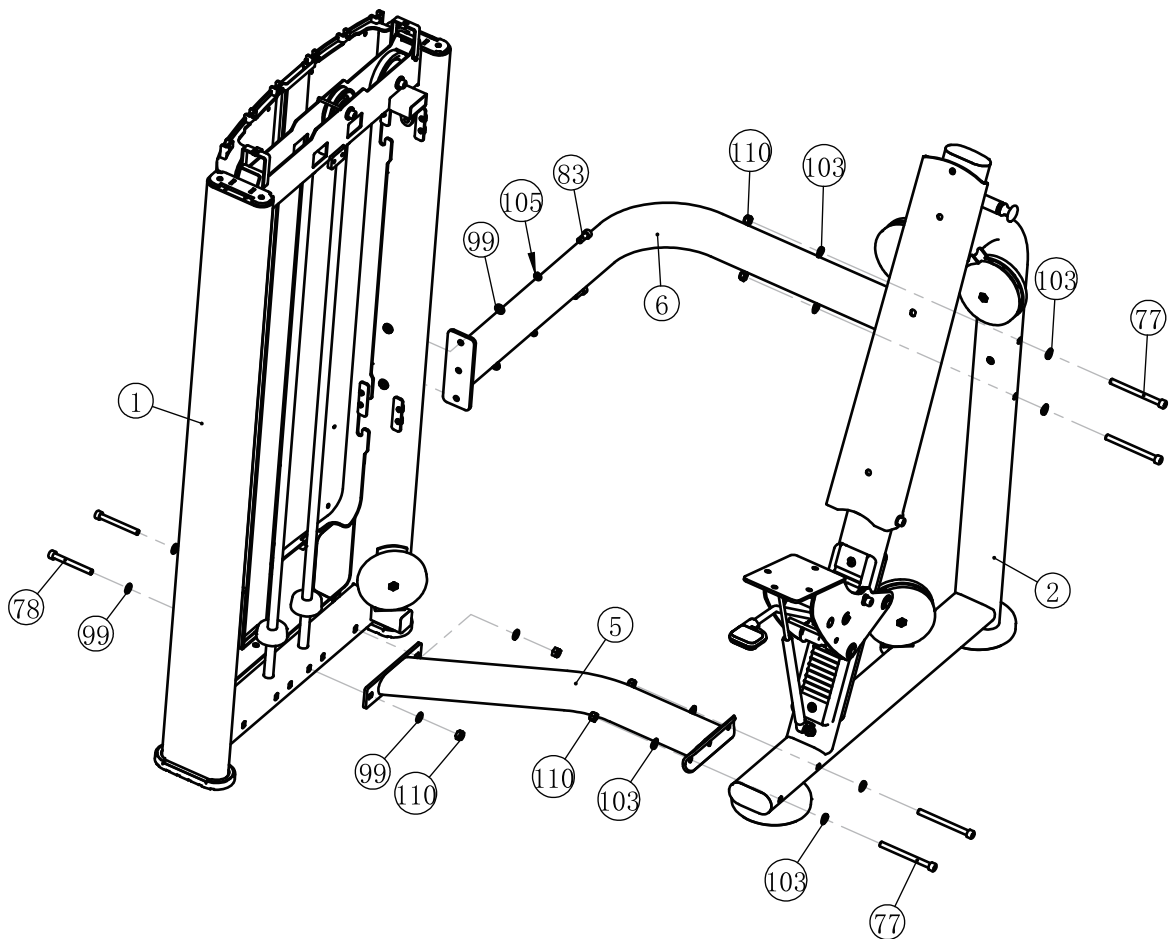
As with any assembled part, proper alignment and adjustment is critical. While tightening the fasteners, be sure to leave room for adjustments. Do not fully tighten the fasteners until instructed to do so. Be careful to assemble the components in the sequence presented in this guide.

Assembly

STEP 1

Note: Hand Tighten Bolts and Nylon Lock Nuts.

Item No	Description	QTY	Item No	Description	QTY
1	Weight Stack Frame Assembly	1	83	Socket Head Cap Screw M10*25	2
2	Main Frame Assembly	1	99	Flat Washer $\phi 11 \times \phi 20 \times 2$	6
5	Ground Connection Frame	1	103	Arc Washer $\phi 10$	8
6	Rear Connection Frame	1	105	Spring Washer $\phi 10$	2
77	Socket Head Cap Screw M10*120	4	110	Nylon Lock Nut M10	6
78	Socket Head Cap Screw M10*90	2			

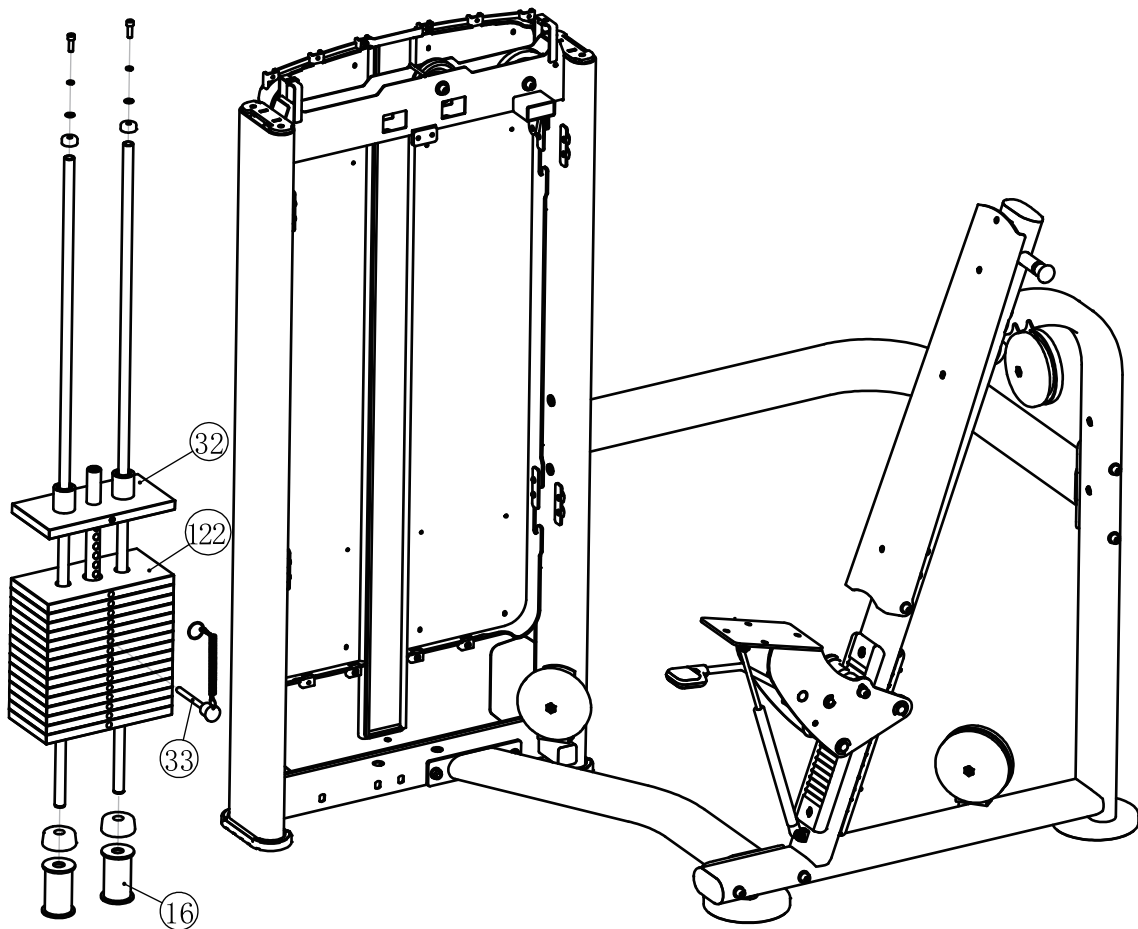


Assembly

STEP 2

Note: Hand Tighten Bolts and Nylon Lock Nuts.

Item No	Description	QTY	Item No	Description	QTY
16	Transfer Elevated	2	33	Selector Pin W/Coil	1
32	Heavy Iron Assembly	1	122	Weight Plate	15

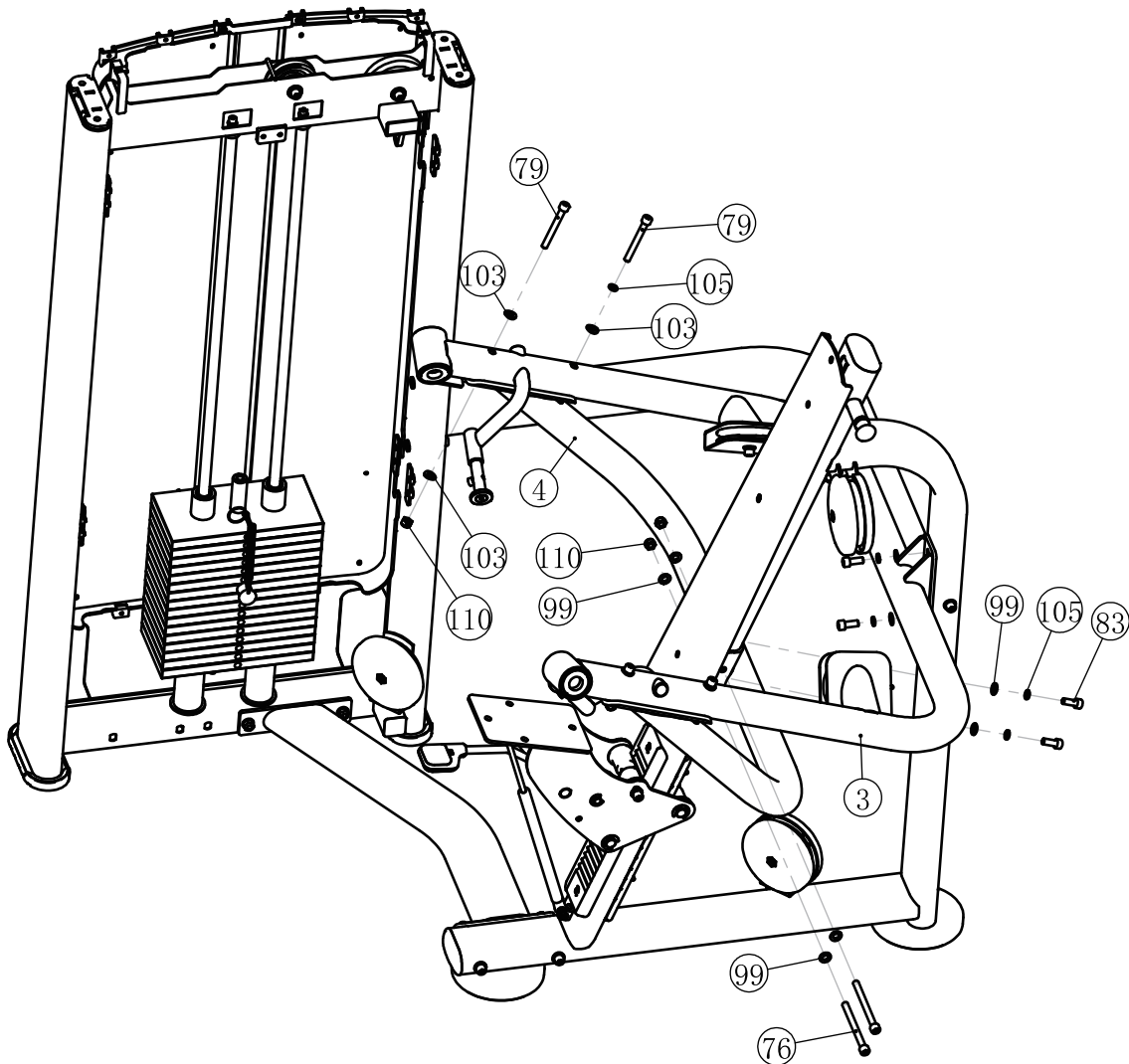


Assembly

STEP 3

Note: Hand Tighten Bolts and Nylon Lock Nuts.

Item No	Description	QTY	Item No	Description	QTY
3	Arm Strength Frame Assembly	1	99	Flat Washer $\phi 11 \times \phi 20 \times 2$	8
4	Arm strength Support Bracket	1	103	Arc Washer $\phi 10$	6
76	Socket Head Cap Screw M10*125	2	105	Spring Washer $\phi 10$	6
79	Socket Head Cap Screw M10*85	4	110	Nylon Lock Nut M10	4
83	Socket Head Cap Screw M10*25	4			

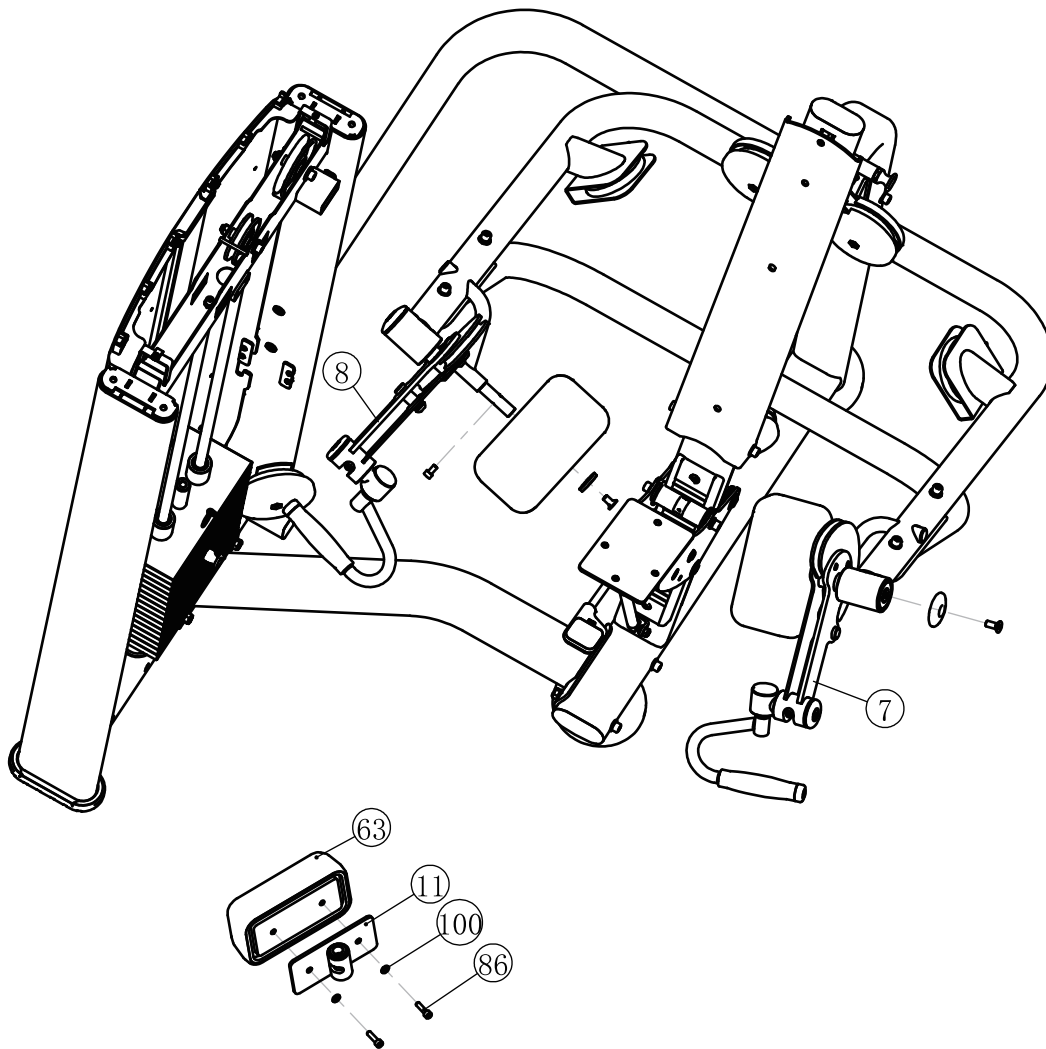


Assembly

STEP 4

Note: Hand Tighten Bolts and Nylon Lock Nuts.

Item No	Description	QTY	Item No	Description	QTY
7	Left Swing Arm Frame Assembly	1	63	Shoulder Pad	2
8	Right Swing Arm Frame Assembly	1	86	Socket Head Cap Screw M8*30	4
11	Elbow Pad Rack	2	100	Flat Washer $\phi 9 \times \phi 16 \times 1.6$	4

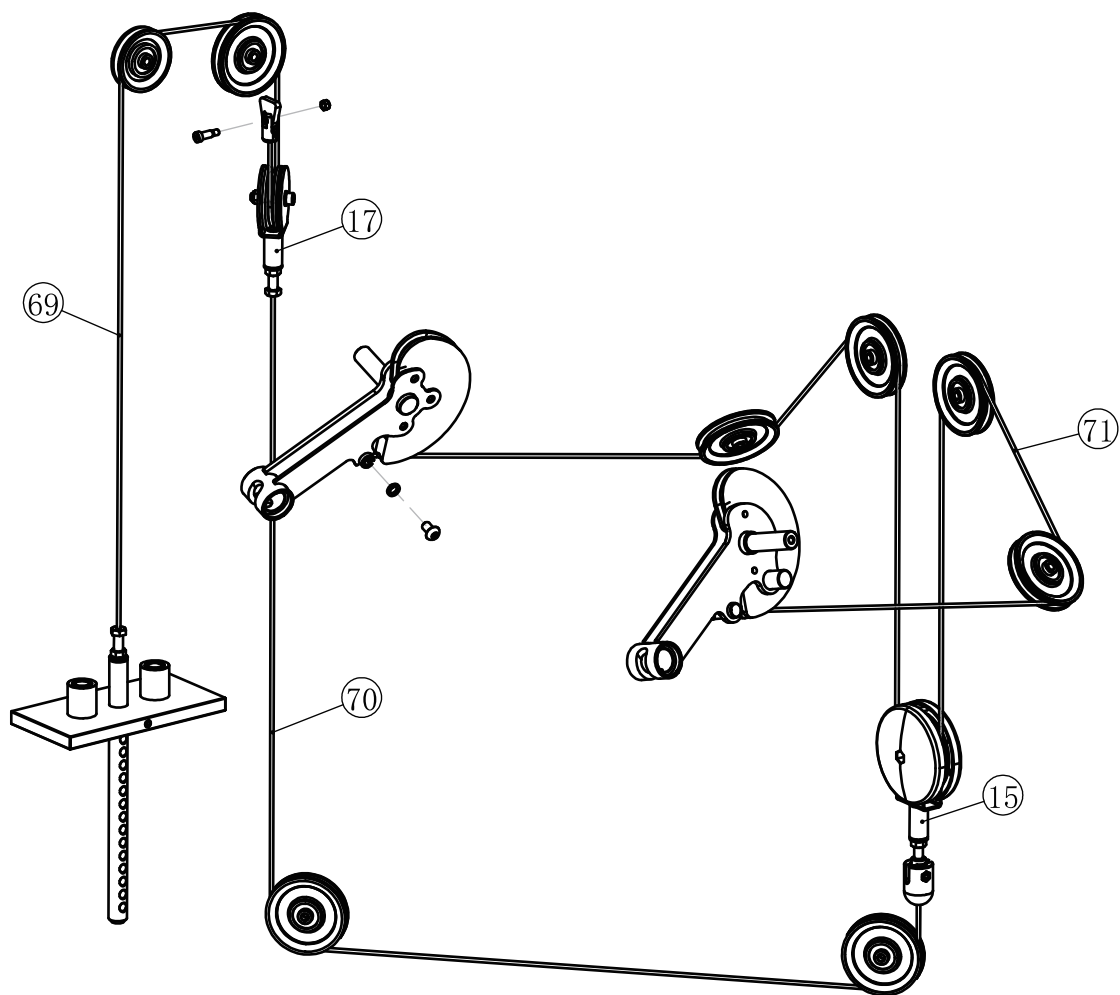


Assembly

STEP 5

Note: Hand Tighten Bolts and Nylon Lock Nuts.

Item No	Description	QTY	Item No	Description	QTY
15	Swing Pulley Frame Assembly	1	70	Cable Assembly 2	1
17	Moving Pulley Frame Assembly	1	71	Cable Assembly3	1
69	Cable Assembly 1	1			

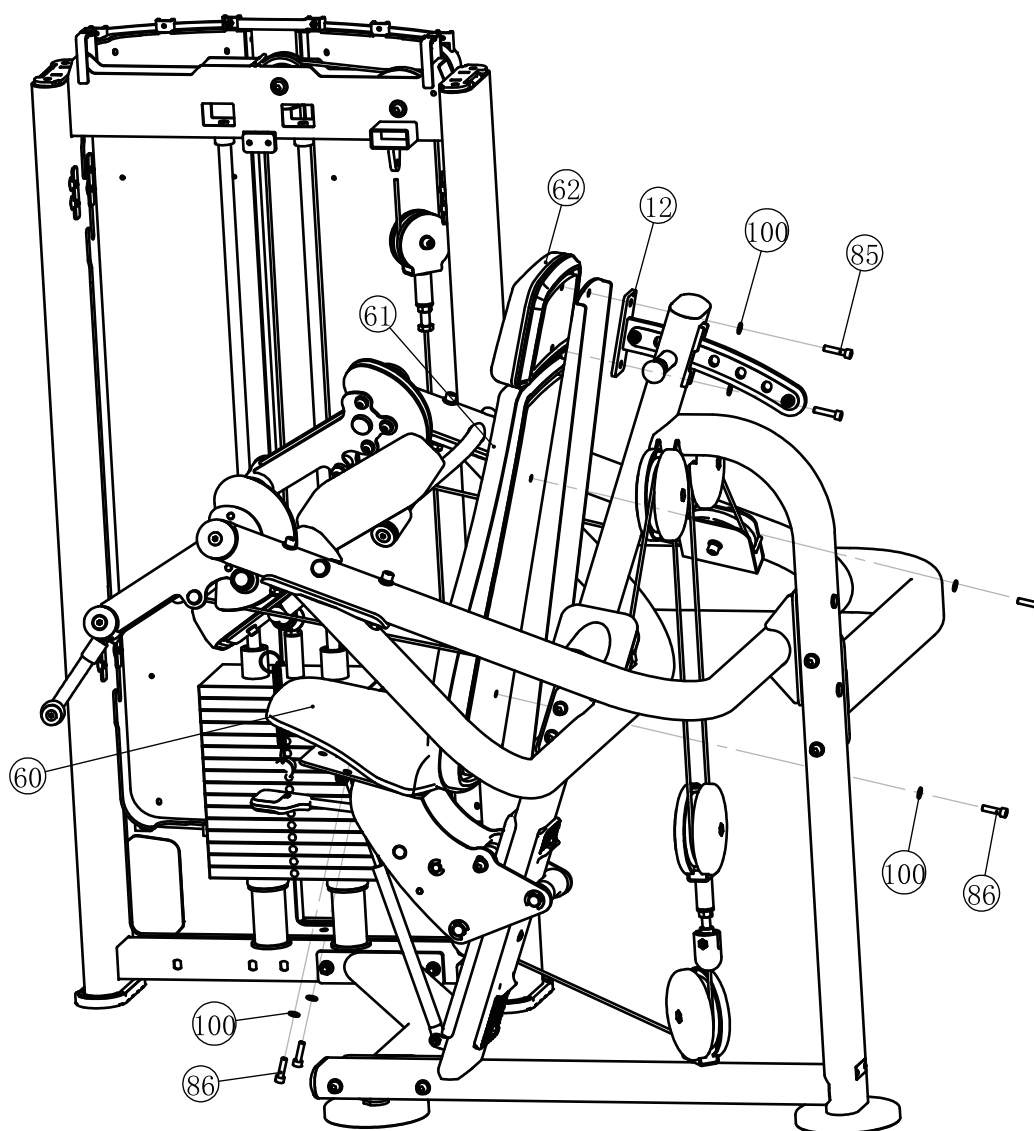


Assembly

STEP 6

Note: Wrench Tighten Screws.

Item No	Description	QTY	Item No	Description	QTY
12	Back Cushion Adjustment Frame Assembly	1	85	Socket Head Cap Screw M8*35	2
60	Seat Cushion	1	86	Socket Head Cap Screw M8*30	4
61	Cushion	1	100	Flat Washer $\phi 9 \times \phi 16 \times 1.6$	6
62	Headrest	1			

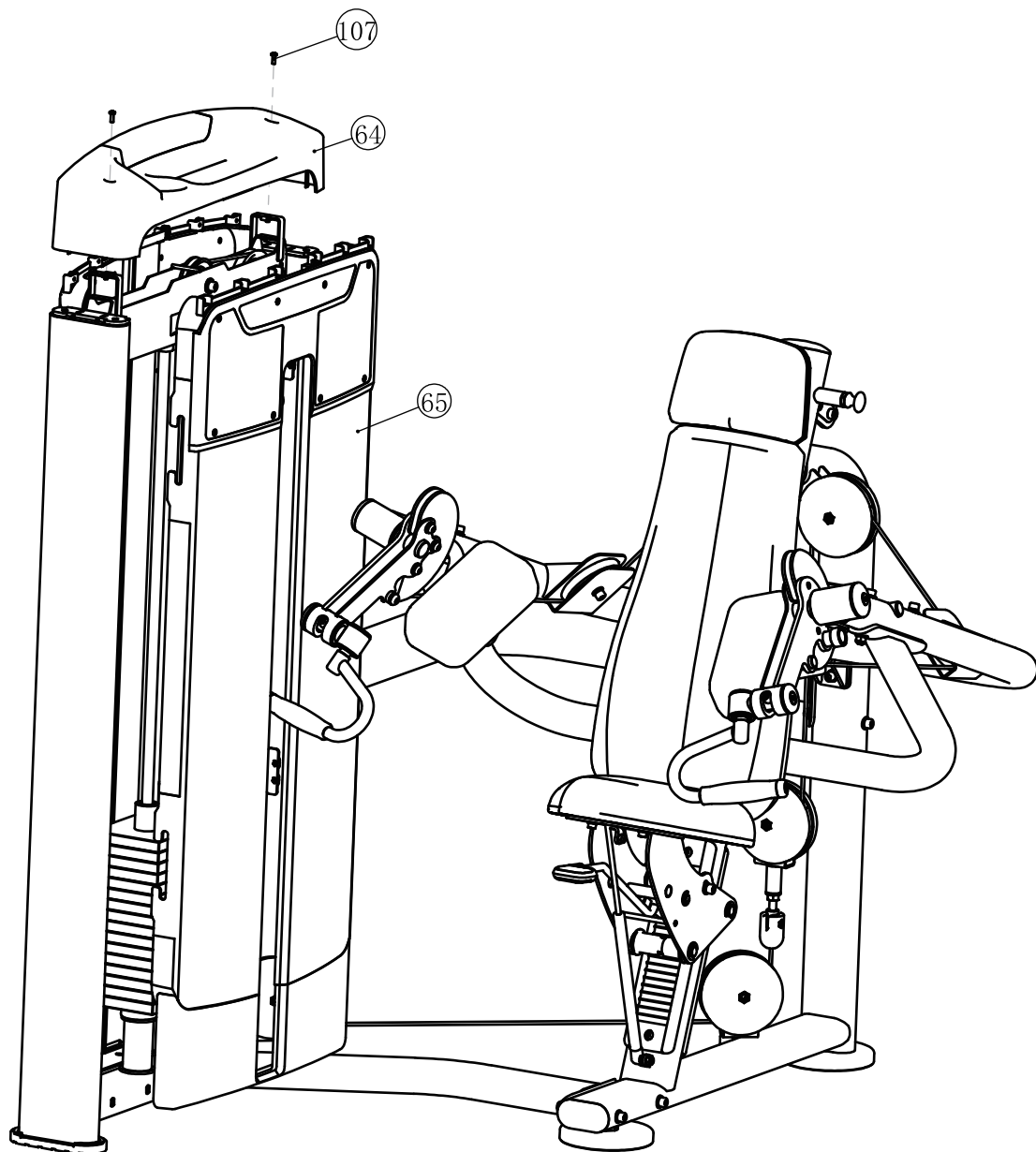


Assembly

STEP 7

Note: Wrench Tighten Screws.

Item No	Description	QTY	Item No	Description	QTY
64	Upper Shroud	1	107	Button Head Cap Screw M5*15	2
65	Side Shroud Assembly	1			



Maintenance Schedule

ROUTINE	COMMERCIAL MAINTENANCE	HOME MAINTENANCE	LATEST DATE ENTRY						
Inspect; Links, Pull Pins, Snap Locks, Swivels, Weight Stack Pins	DAILY	WEEKLY							
Clean; Upholstery	DAILY	WEEKLY							
Inspect; Cables or Belts and their tension	DAILY	WEEKLY							
Inspect; Accessory Bars, and Handles	WEEKLY	3 MONTHS							
Inspect; All Decals	WEEKLY	3 MONTHS							
Inspect; All Nuts and Bolts, Tighten if needed	WEEKLY	3 MONTHS							
Inspect; Anti-Skid Surface	WEEKLY	3 MONTHS							
Clean & Lubricate; Guide Rods with a Teflon (PTFE) based lubricant (Superlube)	MONTHLY	3 MONTHS							
Lubricate; Seat Sleeves, Turcite Bushings, Linear Bearing	MONTHLY	3 MONTHS							
Clean and Wax; All Glossy Finishes	6 MONTHS	YEARLY							
Repack with Grease; Linear Bearings	6 MONTHS	YEARLY							
Replace; Cables, Belts and Connecting Parts	YEARLY	3 YEARS							

Your equipment comes with a commercial maintenance decal. For personal, in home use, please follow the home maintenance schedule listed above.

General Maintenance Information

Links, Pull-Pins, Snap Hooks, Swivels, Weight Stack Pins:

- * Check all pieces for signs of visible wear or damage.
- * Check springs in snap hooks and pull-pins for proper tension and alignment.
- * If the spring sticks or has lost its rigidity, replace it immediately.

Upholstery:

- * To ensure prolonged upholstery life and proper hygiene, all upholstered pads should be wiped down with a damp cloth after every workout.
- * Periodically take the time to use a mild soap or an approved vinyl upholstery cleaner to deter the onset of cracking or drying. Avoid using any abrasive cleaners or cleaners not intended for use on vinyl.
- * Replace ripped or worn upholstery immediately.
- * Keep sharp or pointed objects clear of all upholstery.

Decals:

- * Inspect and familiarize yourself with any safety warnings or other user information posted on each decal.

Nuts and Bolts:

- * Inspect all nuts and bolts for any loosening and tighten if needed.
- * Go through a re-tightening sequence periodically to ensure that all hardware is tensioned properly.

Anti-Skid Surfaces:

- * These surfaces are designed to supply secure footing and need to be replaced if they appear worn or become slippery.

Belts and Cables:

- * We use only high quality belt, and mil-spec cables.
- * Visually inspect the belts and cables for fraying, cracking, peeling or discoloration.
- * While the machine is not in use, carefully run your fingers along the belt or cable to feel for thinning or bulging areas.
- * Replace belts and cables immediately at the first signs of damage or wear. Do not use equipment until belts or cables have been replaced.

Belt and Cable Tension:

- * Referring to the Owners Manual, when belts or cables are used check all bolt attachments to be sure they are properly attached.
- * Check slack in cables and re-adjust cable tension if needed.

Seat Sleeves, Guide Rods:

- * Wipe down adjusting tubes with a dust free rag before applying lubricant.
- * Lubricate seat sleeves and Guide Rods with a Silicon or Teflon based lubricant spray.

Linear Bearings:

- * Referring to the Owners Manual carefully disassemble the bearing from its housing and place a finger full of light grease (lithium, super lube, etc.) into the inside of the bearing. Using your finger, press the grease into the ball-bearings and their tracks. Repeat until the ball-bearing tracks are full of grease. Insert the shaft back into the bearing and wipe off excess grease.

PLEASE KEEP THIS FOR YOUR RECORDS

Weight Training Tips

Use this manual to guide you through the basic exercises you can perform on your equipment. To gain maximum results and avoid possible injury, consult a fitness professional to develop your complete exercise program.

Always consult your physician before starting any exercise program.

To be successful in your exercise program, it is important to develop an understanding of the basic principles of strength training. Now that you have your equipment, it is only natural that you want to get started immediately. First, determine a set of realistic goals and objectives for yourself. By deciding on an exercise plan that is right for you prior to starting, you will contribute significantly to your success.

Warm up properly before engaging in weight resistance training. Stretching, yoga, jogging, calisthenics or other cardiovascular exercise can help prepare your body for the heavier workload of lifting weights.

Learn how to perform the exercise correctly before using heavy weight. Correct form is important to avoid injury and to ensure that you work the proper muscle groups.

Know your limitations. If you are new to weight training or are embarking on an exercise regimen after a long layoff, start slowly and build foundational strength over a longer period of time.

Pay attention to your breathing. Exhale when you exert is a general rule of thumb. Never hold your breath.

