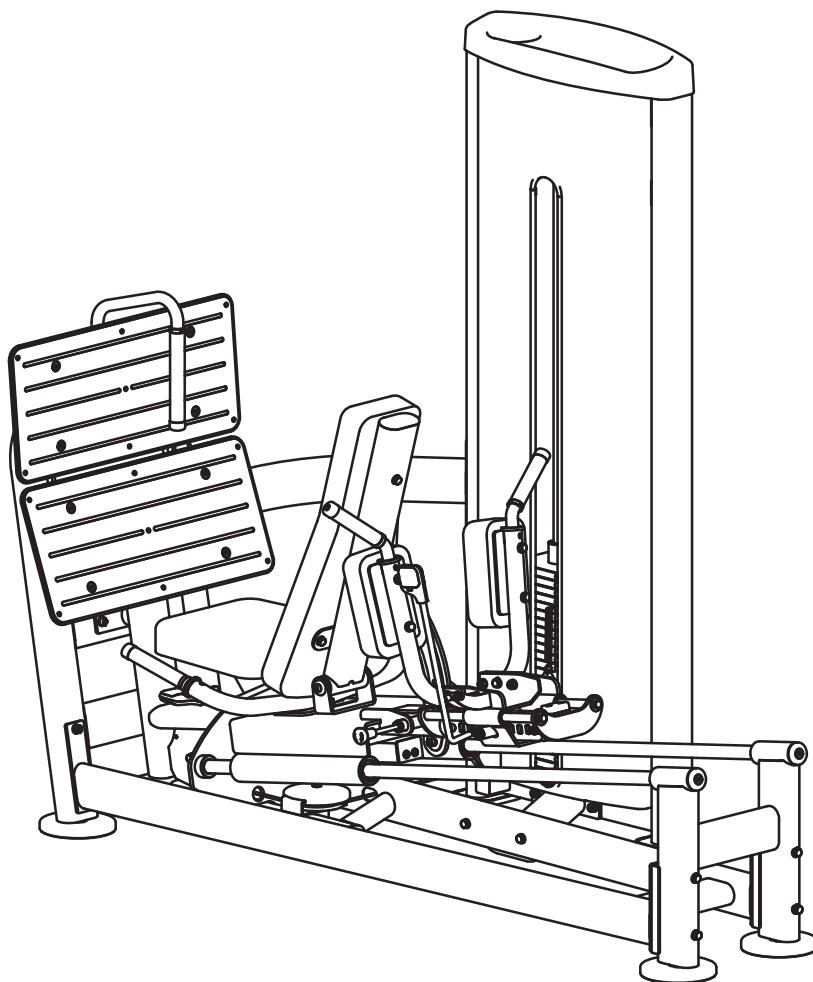


DA040B

SEATED LEG PRESS

OWNER'S MANUAL



! CAUTION

Read all precautions
and instructions in this manual
before using this equipment

Table Of Contents

Read all precautions and instructions in this manual before using this equipment.

Important Safety Instructions-----	3
Instructions-----	4
Parts List-----	5
Exploded View-----	7
Measurement Guide-----	9
Assembly Instructions-----	10
Assembly-----	11
Maintenance Schedule-----	17
General Maintenance Information-----	18
Weight Training Tips-----	19

Important Safety Instructions

Before beginning any fitness program, you should obtain a complete physical examination from your physician. When using exercise equipment, basic precautions should always be taken, including the following:

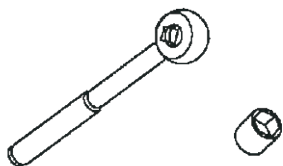
1. Read all instructions before using the equipment.
These instructions are written to ensure your safety and to protect the unit.
2. Use the equipment only for its intended purpose as described in this guide.
Do not use accessory attachments that are not recommended by the manufacturer: such attachments might cause injuries.
3. The product should only be used on a level surface and is with 0.5 meters space around the product.
Do not use the equipment outdoors.
4. Do not allow children on or near the equipment. And children are not allowed to use this equipment.
Teenagers should use this equipment with adult supervision.
5. Do not overexert yourself or work to exhaustion.
Do not attempt to lift more weight than you can control safely.
If you feel any pain or abnormal symptoms, stop your workout immediately and consult your physician.
6. This equipment is not used as medical apparatus and instruments.
7. Never operate the unit when it has been dropped or damaged.
Never drop or insert anything into any opening in the equipment.
Always check the unit and its cables before each use. Make sure that all fasteners and cables are secure and in good working condition.
Frayed or worn cables can be dangerous and may cause injury. Periodically check these cables for any indication of wear.
Keep hands, limbs, loose clothing and long hair well out of the way of moving parts.
8. Be careful when getting on or off the equipment.
9. Wear proper exercise clothing and shoes for your workout, no loose clothing.

Instructions

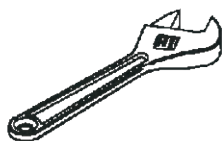
Before beginning assembly please take the time to read instructions thoroughly. Please use the various lists in this manual to make sure that all parts have been included in your shipment. When ordering, use part number and description from the lists. Use only our replacement part when servicing. Failure to do so will void your warranty and could result in personal injury.

The equipment is designed to provide the smoothest, most effective exercise motion possible. After assembly, you should check all functions to ensure correct operation. If you experience problems, first recheck the assembly instructions to locate any possible errors made during assembly. If you are unable to correct the problem, call your authorized dealer. Be sure to have your serial number and this manual when calling. When all parts have been accounted for, continue on.

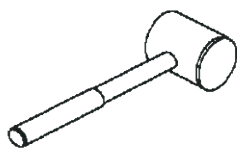
Tools Required



Ratchet Wrench and Socket



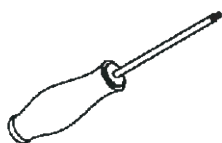
Adjustable Wrench



Rubber Mallet



Hex Key Wrench Set



Phillips Screwdriver

Parts List

NOTE: SOME OF THESE PARTS MAY COME PRE-INSTALLED.

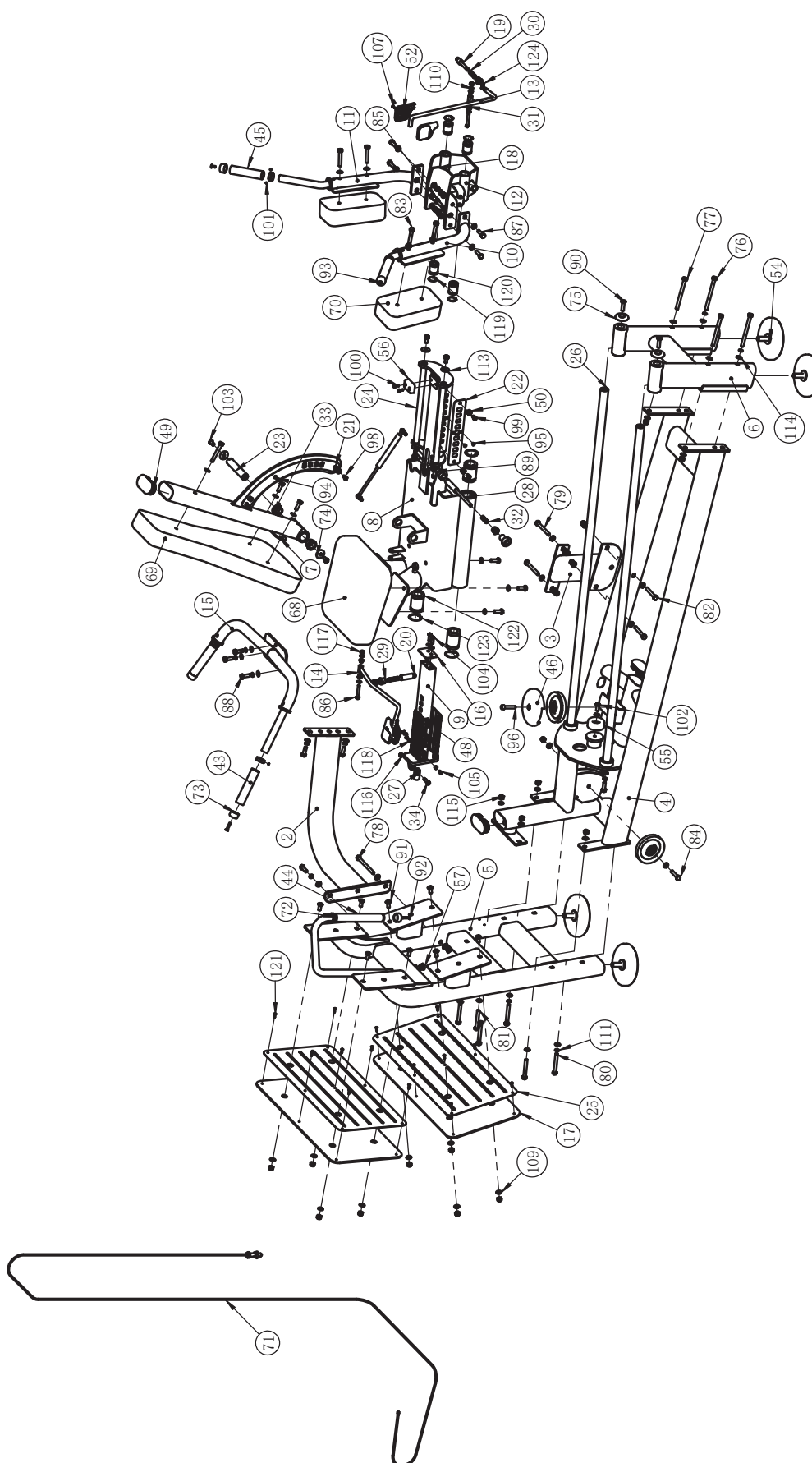
ITEM NO.	DESCRIPTION	QTY	ITEM NO.	DESCRIPTION	QTY
1	Weight Stack Frame	1	63	Top Shroud	1
2	Top Connecting Frame	1	64	Cover Edge Strip	2
3	Connecting Frame	1	65	Top Cover Edge Strip	1
4	Main Frame	1	66	Bottom Cover Edge Strip	1
5	Pedal Frame	1	67	Rubber Sleeve	2
6	Back Support Frame	1	68	Seat Pad	1
7	Back Cushion Frame	1	69	Back Pad	1
8	Seat Cushion Sliding Frame	1	70	Shoulder Pad	2
9	Sliding Frame	1	71	Cable	1
10	Left Shoulder Cushion Frame	1	72	Aluminium Ring $\phi 25$	5
11	Right Shoulder Cushion Frame	1	73	Aluminium Cap $\phi 32.5 \times \phi 26 \times 19$	5
12	Shoulder Cushion Regulating Frame	1	74	Aluminum End Cap $\phi 34 \times 5$	2
13	Shoulder Pad Adjustment Handle Holder	1	75	Aluminum End Cap $\phi 50 \times 8$	2
14	Handle Adjustment Bracket	1	76	Hex Head Bolt M10 \times 130	2
15	Handle Frame	1	77	Hex Head Bolt M10 \times 125	2
16	Foot Pedal	1	78	Hex Head Bolt M10 \times 120	1
17	Limit Baffle	2	79	Hex Head Bolt M10 \times 90	2
18	Stiffening Plate	1	80	Hex Head Bolt M10 \times 80	3
19	Shaft $\phi 12.7 \times 90$	1	81	Hex Head Bolt M10 \times 75	5
20	Shaft $\phi 18 \times \phi 12.7 \times 121.5$	1	82	Hex Head Bolt M10 \times 70	2
21	Scratch Board 419.4 \times 109.9 \times 1.5	1	83	Hex Head Bolt M10 \times 60	4
22	Scratch Board 279 \times 50 \times 1.5	1	84	Hex Head Bolt M10 \times 50	2
23	Shaft $\phi 25.4 \times 131$	1	85	Hex Head Bolt M10 \times 40	2
24	Guide Rod $\phi 20 \times 349$	2	86	Hex Head Bolt M8 \times 50	2
25	Footboard	2	87	Hex Head Bolt M10 \times 35	4
26	Guide Rod $\phi 30 \times 1573.5$	2	88	Hex Head Bolt M10 \times 30	13
27	Cable Connector	1	89	Hex Head Bolt M10 \times 20	4
28	Shaft $\phi 18.2 \times 213$	1	90	Flat Head Cap Screw M10 \times 40	2
29	Hex Nut M20	3	91	Flat Head Cap Screw M10 \times 25	8
30	Spring $\phi 1.5 \times \phi 13.5 \times 39$	2	92	Flat Head Cap Screw M6 \times 30	3
31	Spacer $\phi 16 \times \phi 8 \times 8$	4	93	Flat Head Cap Screw M6 \times 16	2
32	Spring $\phi 1.2 \times \phi 13 \times 38$	1	94	Flat Head Cap Screw M6 \times 10	2
33	Spacer $\phi 38 \times \phi 25.4 \times 18$	2	95	Flat Cap Screw M5 \times 10	2
34	Shoulder Bolt	1	96	Socket Head Cap Screw M10 \times 50	2
35	Gap Spring	1	97	Soket Head Cap Screw M8 \times 25	2
36	Guide Rod	2	98	Soket Head Cap Screw M8 \times 15	1
37	Top Plate	1	99	Soket Head Cap Screw M8 \times 12	2
38	Spacer Bush	2	100	Soket Head Cap Screw M6 \times 15	4
39	L Bracket	2	101	Socket Set Screw M5 \times 3	10
40	Rear Shroud	1	102	Button Head Cap Screw M10 \times 25	1
41	Front Shroud	1	103	Button Head Cap Screw M10 \times 20	2

Parts List

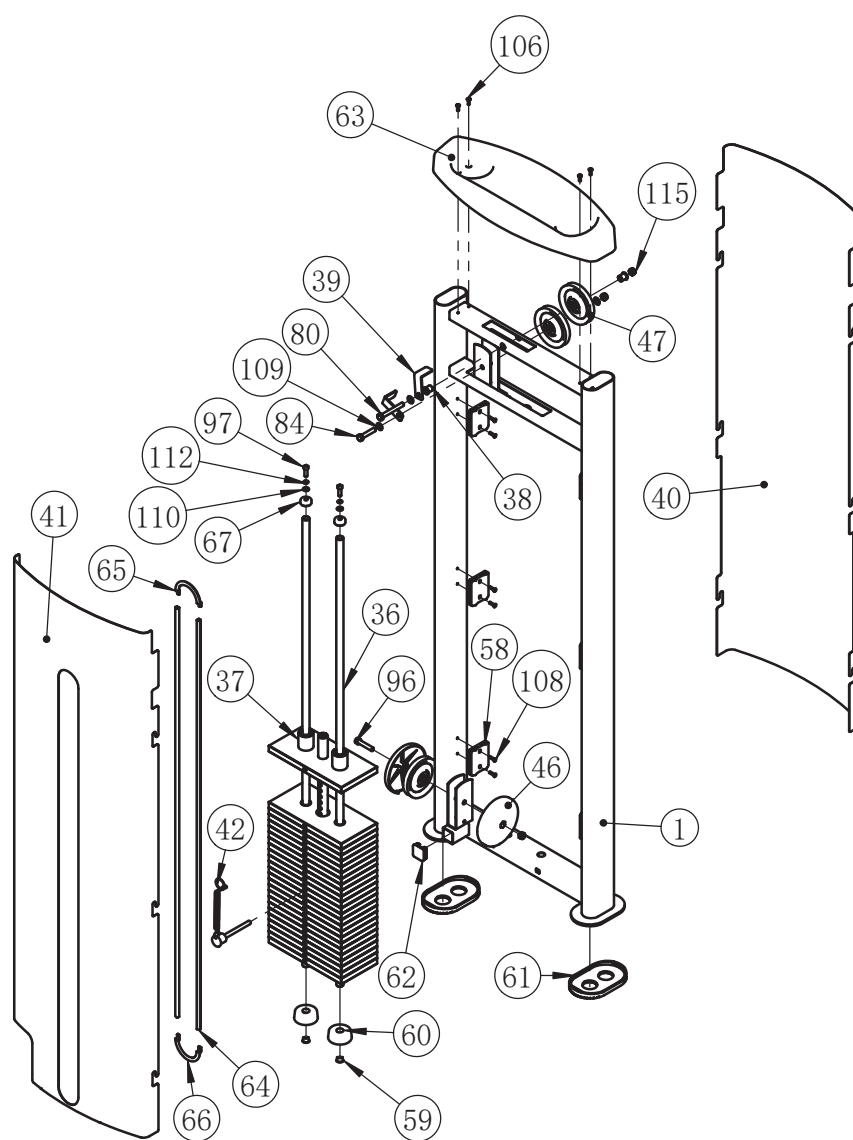
NOTE: SOME OF THESE PARTS MAY COME PRE-INSTALLED.

ITEM NO.	DESCRIPTION	QTY	ITEM NO.	DESCRIPTION	QTY
42	Selector Pin W/Coil	1	104	Button Head Cap Screw M8×25	2
43	GripST $\phi 24 \times \phi 31 \times 140$	2	105	Button Head Cap Screw M6×12	2
44	Grip ST $\phi 24 \times \phi 31 \times 205$	1	106	Cross Recess Head Screw M5×15	4
45	Grip ST $\phi 24 \times \phi 31 \times 130$	2	107	Cross Recess Head Screw M4×10	4
46	4.5" Pulley Cover	3	108	Cross Recessed Countersunk Head Screw M5×20	12
47	4.5" Pulley	5	109	Flat Washer $\phi 11 \times \phi 20 \times 2$	57
48	Plastic Tube Guide	2	110	Flat Washer $\phi 9 \times \phi 16 \times 1.6$	10
49	Plug RT50×100	3	111	Spring Washer $\phi 10$	12
50	Spacer $\phi 17 \times 10.5$	3	112	Spring Washer $\phi 8$	2
51	Handle Top	2	113	Flat Washer $\phi 11 \times \phi 30 \times 2$	4
52	Handle Bottom	2	114	Arc Washer $\phi 10$	11
53	Adjust The Handle	1	115	Nylon Lock Nut M10	27
54	Adjustable Foundation Foot	4	116	Damping Nut	1
55	Large Rubber Pad	1	117	Nylon Lock Nut M8	2
56	Rubber Pad	2	118	Hex Nut M6	2
57	Pipe Plug $\phi 24.5 \times 15.5$	1	119	Circlips for Hole $\phi 32$	4
58	Shroud Clip	6	120	Linear Motion Bearing $\phi 32 \times \phi 20 \times 42$	4
59	Rubber Plug	2	121	Rivet $\phi 5 \times 13$	14
60	Rubber Pad	2	122	Linear Motion Bearing $\phi 47 \times \phi 30 \times 68$	4
61	Foot Cover	2	123	Circlips for Hole $\phi 47$	4
62	Plug $\square 30$	1	124	Chain Buckle	2

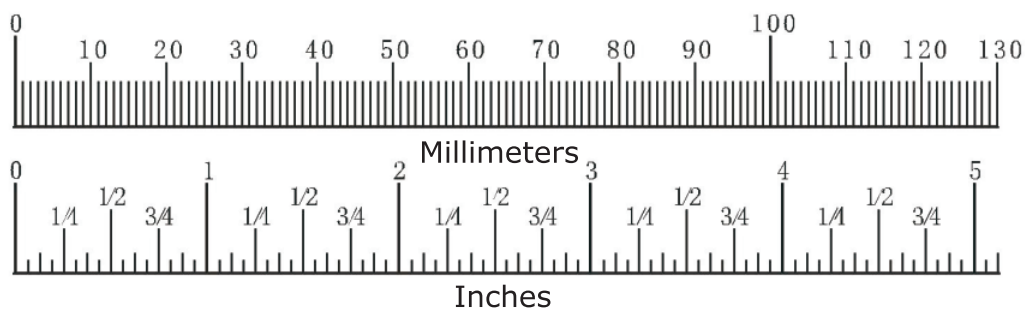
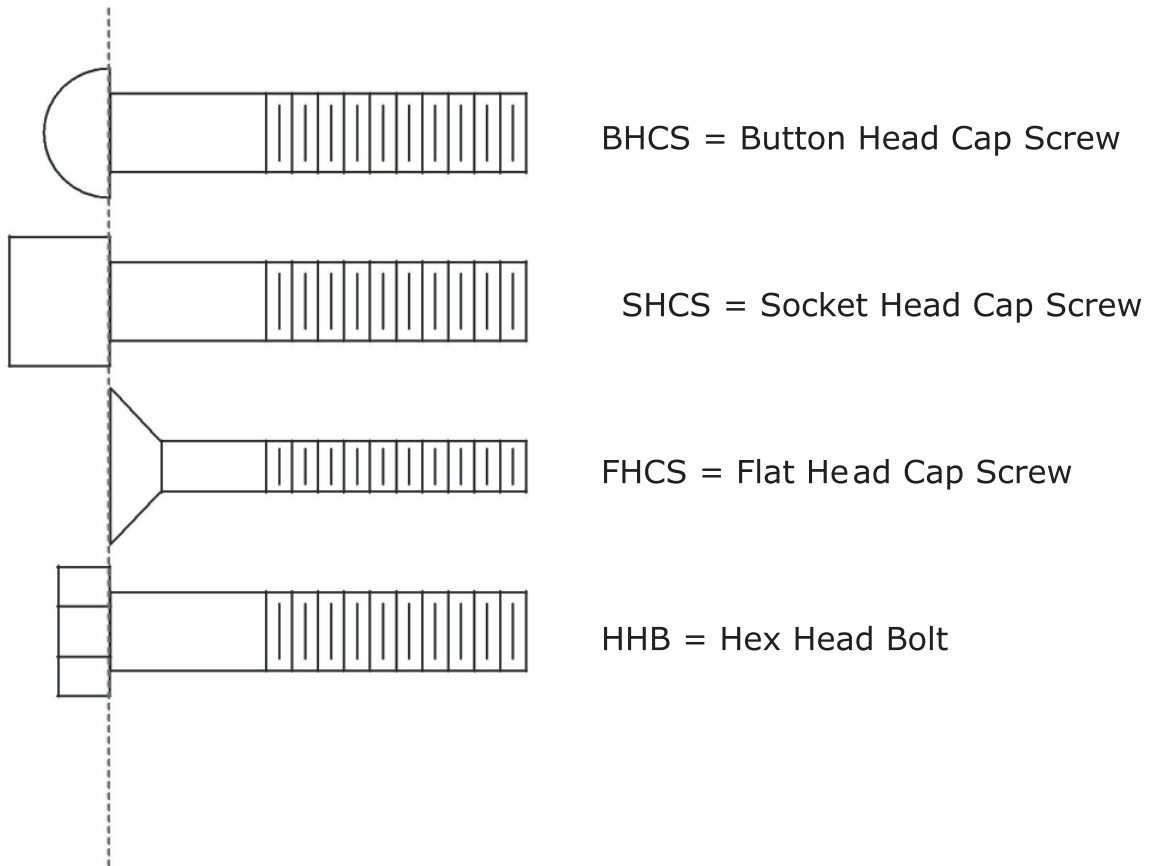
Exploded View



Exploded View



Measurement Guide



Assembly Instructions

Assembly of the equipment takes professional installers about 2 hours. If this is the first time you have assembled this type of equipment, plan to spend more time. It is strongly recommended to assemble the equipment by professional installers. You may find it quicker, safer, easier to assemble this equipment with the help of a friend, as some of components may be large, heavy or awkward to handle alone. It is important that you assemble your product in a clean, clear, uncluttered area. This will enable you to move around the product while you are fitting components and reduce the possibility of injury during assembly.



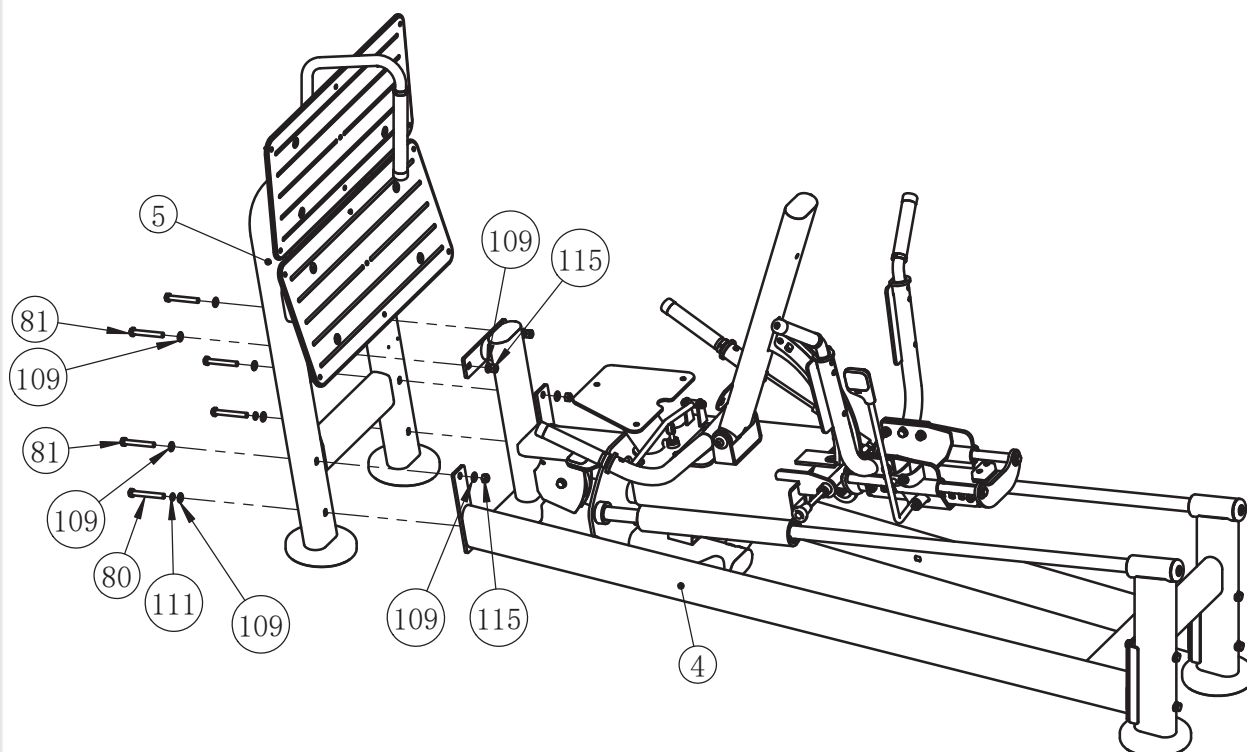
NOTE

As with any assembled part, proper alignment and adjustment is critical. While tightening the fasteners, be sure to leave room for adjustments. Do not fully tighten the fasteners until instructed to do so. Be careful to assemble the components in the sequence presented in this guide.

Assembly

Step 1

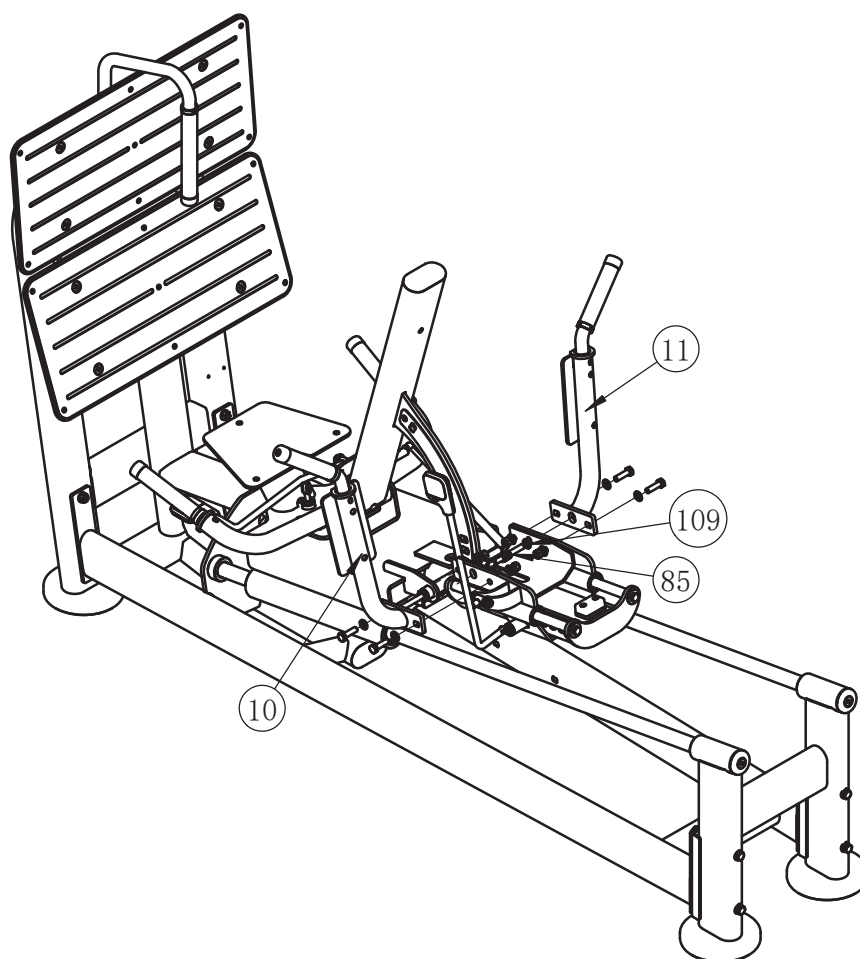
ITEM NO.	DESCRIPTION	QTY	ITEM NO.	DESCRIPTION	QTY
4	Main Frame	1	109	Flat Washer $\phi 11 \times \phi 20 \times 2$	10
5	Pedal Frame	1	111	Spring Washer $\phi 10$	2
80	Hex Head Bolt M10 \times 80	2	115	Nylon Lock Nut M10	4
81	Hex Head Bolt M10 \times 75	4			



Assembly

Step 2

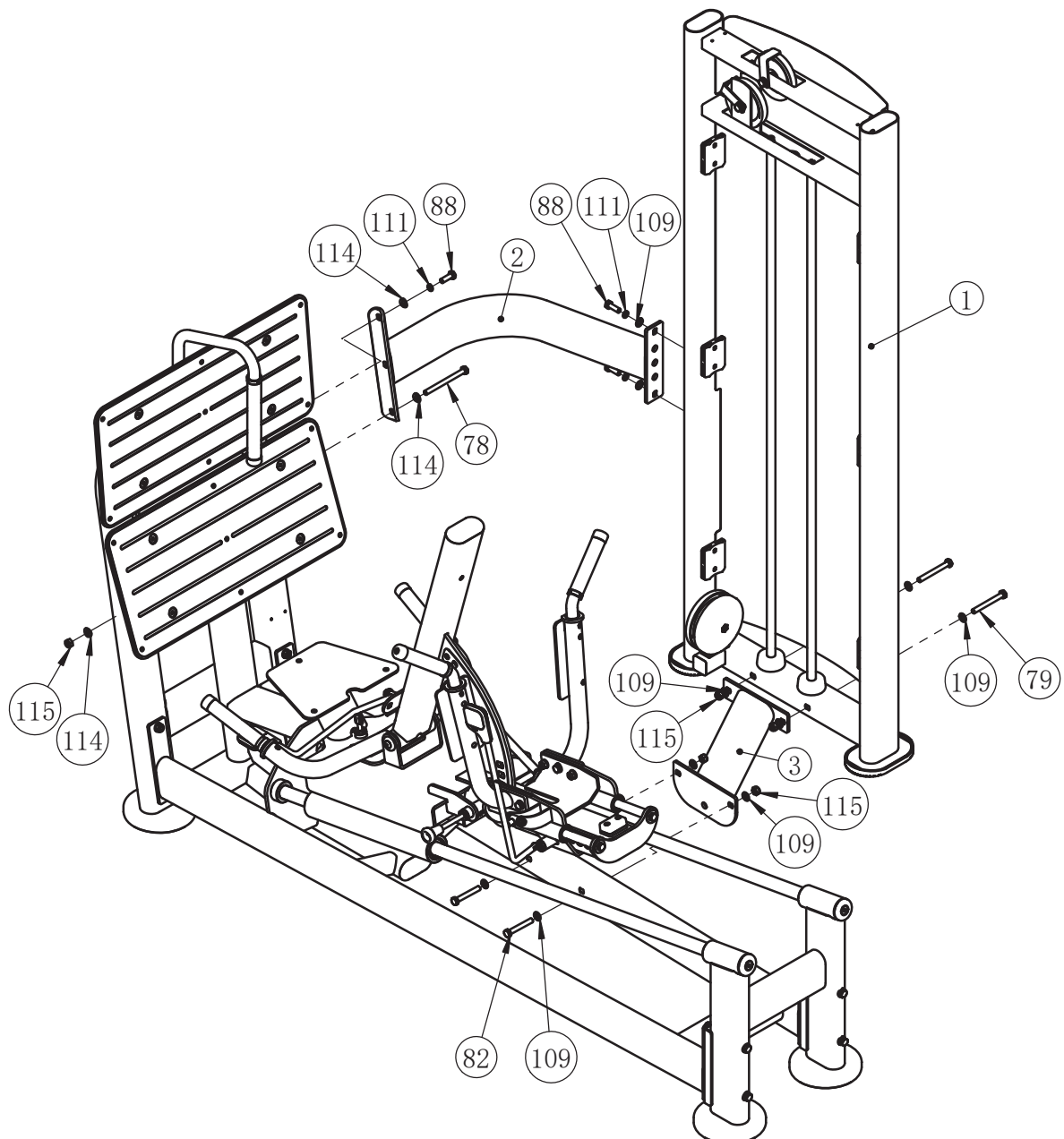
ITEM NO.	DESCRIPTION	QTY
10	Left Shoulder Cushion Frame	1
11	Right Shoulder Cushion Frame	1
85	Hex Head Bolt M10×40	2
109	Flat Washer $\phi 11 \times \phi 20 \times 2$	2



Assembly

Step 3

ITEM NO.	DESCRIPTION	QTY	ITEM NO.	DESCRIPTION	QTY
1	Weight Stack Frame	1	88	Hex Head Bolt M10×30	3
2	Top Connecting Frame	1	109	Flat Washer $\phi 11 \times \phi 20 \times 2$	10
3	Connecting Frame	1	111	Spring Washer $\phi 10$	3
78	Hex Head Bolt M10×120	1	114	Arc Washer $\phi 10$	3
79	Hex Head Bolt M10×90	2	115	Nylon Lock Nut M10	5
82	Hex Head Bolt M10×70	2			

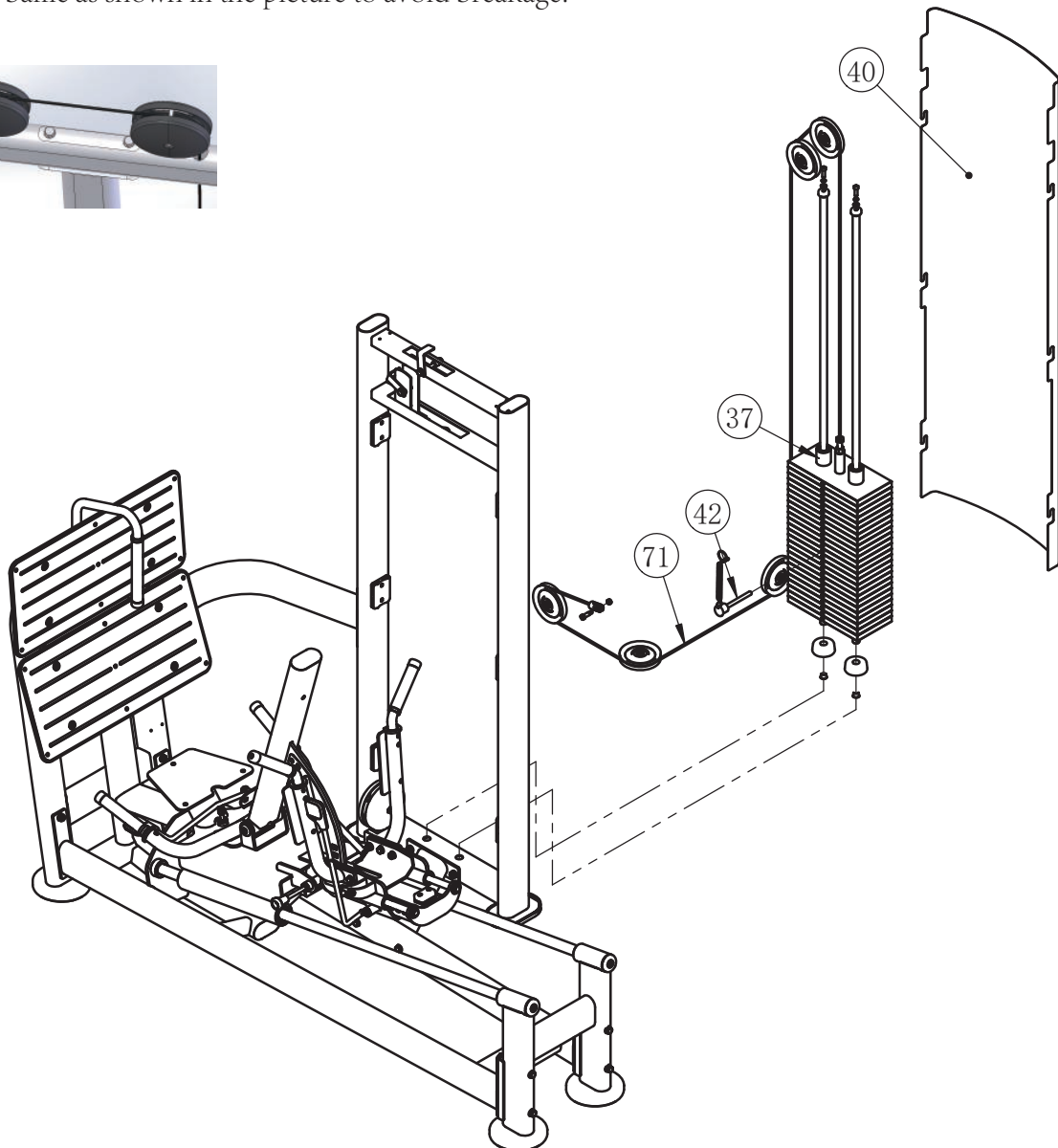
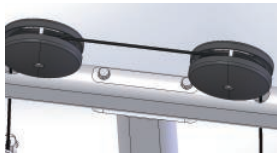


Assembly

Step 4

ITEM NO.	DESCRIPTION	QTY
37	Top Plate	1
40	Rear Shroud	1
42	Selector Pin W/Coil	1
71	Cable	1

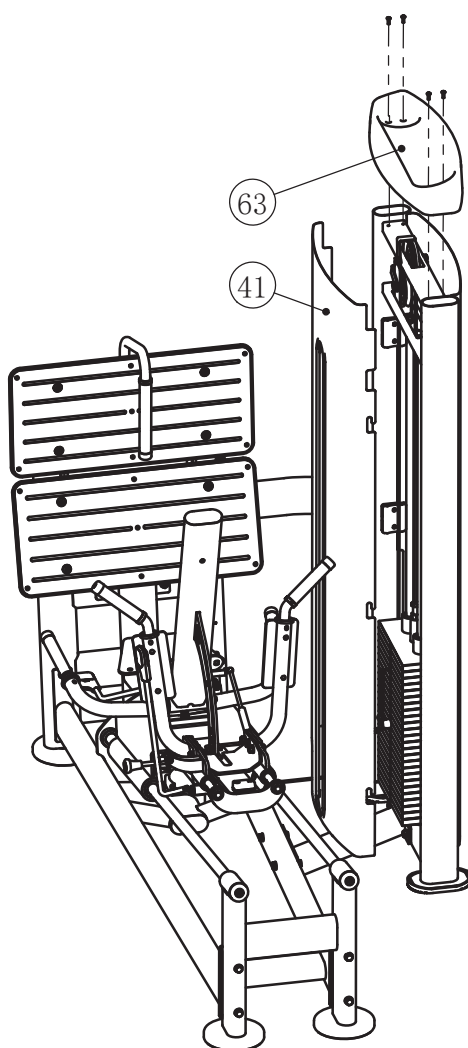
When installing the steel cable, the customer needs to avoid passing above the baffle and under the baffle as shown in the picture to avoid breakage.



Assembly

Step 5

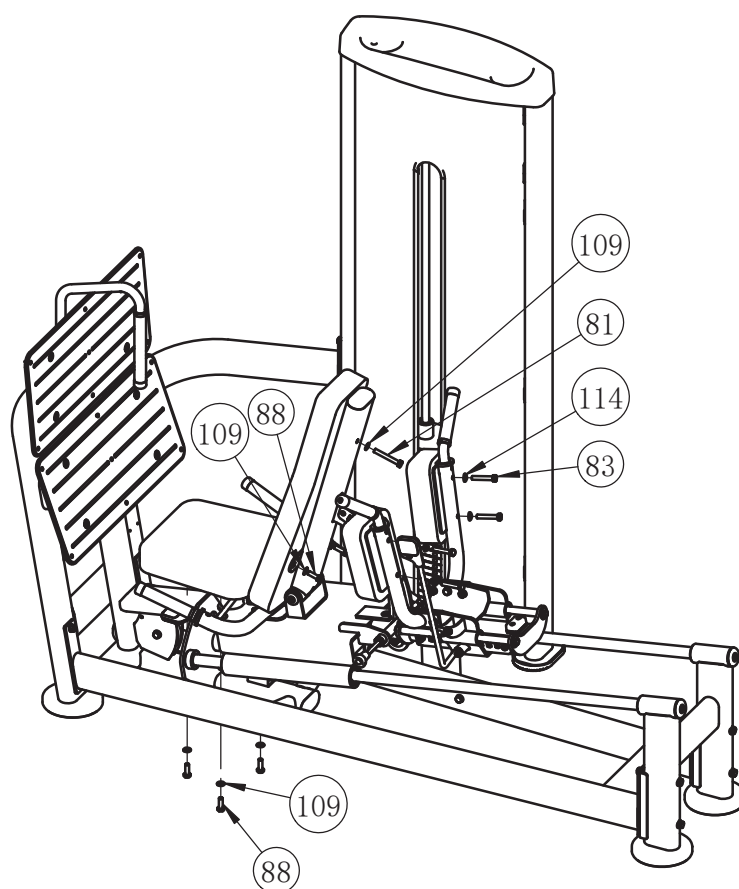
ITEM NO.	DESCRIPTION	QTY
41	Front Shroud	1
63	Top Shroud	1



Assembly

Step 6

ITEM NO.	DESCRIPTION	QTY	ITEM NO.	DESCRIPTION	QTY
81	Hex Head Bolt M10×75	1	109	Flat Washer $\phi 11 \times \phi 20 \times 2$	6
83	Hex Head Bolt M10×60	4	114	Arc Washer $\phi 10$	4
88	Hex Head Bolt M10×30	5			



Maintenance Schedule

ROUTINE	COMMERCIAL MAINTENANCE	HOME MAINTENANCE	LATEST DATE ENTRY						
Inspect; Links, Pull Pins, Snap Locks, Swivels, Weight Stack Pins	DAILY	WEEKLY							
Clean; Upholstery	DAILY	WEEKLY							
Inspect; Cables or Belts and their tension	DAILY	WEEKLY							
Inspect; Accessory Bars, and Handles	WEEKLY	3 MONTHS							
Inspect; All Decals	WEEKLY	3 MONTHS							
Inspect; All Nuts and Bolts, Tighten if needed	WEEKLY	3 MONTHS							
Inspect; Anti-Skid Surface	WEEKLY	3 MONTHS							
Clean & Lubricate; Guide Rods with a Teflon (PTFE) based lubricant (Superlube)	MONTHLY	3 MONTHS							
Lubricate; Seat Sleeves, Turcite Bushings, Linear Bearing	MONTHLY	3 MONTHS							
Clean and Wax; All Glossy Finishes	6 MONTHS	YEARLY							
Repack with Grease; Linear Bearings	6 MONTHS	YEARLY							
Replace; Cables, Belts and Connecting Parts	YEARLY	3 YEARS							

Your equipment comes with a commercial maintenance decal. For personal, in home use, please follow the home maintenance schedule listed above.

General Maintenance Information

Links, Pull-Pins, Snap Hooks, Swivels, Weight Stack Pins:

- * Check all pieces for signs of visible wear or damage.
- * Check springs in snap hooks and pull-pins for proper tension and alignment.
- * If the spring sticks or has lost its rigidity, replace it immediately.

Upholstery:

- * To ensure prolonged upholstery life and proper hygiene, all upholstered pads should be wiped down with a damp cloth after every workout.
- * Periodically take the time to use a mild soap or an approved vinyl upholstery cleaner to deter the onset of cracking or drying. Avoid using any abrasive cleaners or cleaners not intended for use on vinyl.
- * Replace ripped or worn upholstery immediately.
- * Keep sharp or pointed objects clear of all upholstery.

Decals:

- * Inspect and familiarize yourself with any safety warnings or other user information posted on each decal.

Nuts and Bolts:

- * Inspect all nuts and bolts for any loosening and tighten if needed.
- * Go through a re-tightening sequence periodically to ensure that all hardware is tensioned properly.

Anti-Skid Surfaces:

- * These surfaces are designed to supply secure footing and need to be replaced if they appear worn or become slippery.

Belts and Cables:

- * We use only high quality belt, and mil-spec cables.
- * Visually inspect the belts and cables for fraying, cracking, peeling or discoloration.
- * While the machine is not in use, carefully run your fingers along the belt or cable to feel for thinning or bulging areas.
- * Replace belts and cables immediately at the first signs of damage or wear. Do not use equipment until belts or cables have been replaced.

Belt and Cable Tension:

- * Referring to the Owners Manual, when belts or cables are used check all bolt attachments to be sure they are properly attached.
- * Check slack in cables and re-adjust cable tension if needed.

Seat Sleeves, Guide Rods:

- * Wipe down adjusting tubes with a dust free rag before applying lubricant.
- * Lubricate seat sleeves and Guide Rods with a Silicon or Teflon based lubricant spray.

Linear Bearings:

- * Referring to the Owners Manual carefully disassemble the bearing from its housing and place a finger full of light grease (lithium, super lube, etc.) into the inside of the bearing. Using your finger, press the grease into the ball-bearings and their tracks. Repeat until the ball-bearing tracks are full of grease. Insert the shaft back into the bearing and wipe off excess grease.

PLEASE KEEP THIS FOR YOUR RECORDS

Weight Training Tips

Use this manual to guide you through the basic exercises you can perform on your equipment. To gain maximum results and avoid possible injury, consult a fitness professional to develop your complete exercise program.

Always consult your physician before starting any exercise program.

To be successful in your exercise program, it is important to develop an understanding of the basic principles of strength training. Now that you have your equipment, it is only natural that you want to get started immediately.

First, determine a set of realistic goals and objectives for yourself. By deciding on an exercise plan that is right for you prior to starting, you will contribute significantly to your success.

Warm up properly before engaging in weight resistance training. Stretching, yoga, jogging, calisthenics or other cardiovascular exercise can help prepare your body for the heavier workload of lifting weights.

Learn how to perform the exercise correctly before using heavy weight. Correct form is important to avoid injury and to ensure that you work the proper muscle groups.

Know your limitations. If you are new to weight training or are embarking on an exercise regimen after a long layoff, start slowly and build foundational strength over a longer period of time.

Pay attention to your breathing. Exhale when you exert is a general rule of thumb. Never hold your breath.