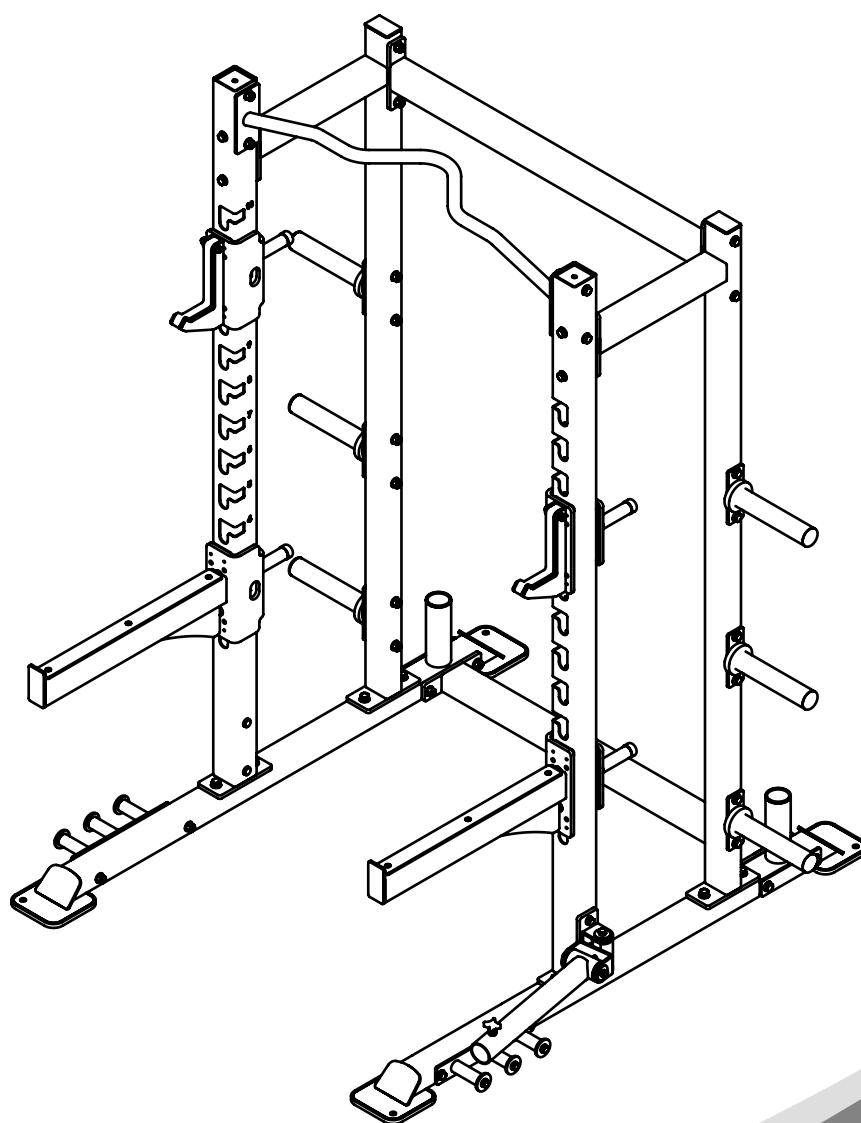


BS018

HALF RACK

# OWNER'S MANUAL



## **! CAUTION**

Read all precautions  
and instructions in this manual  
before using this equipment

## **! CAUTION**

Read all precautions and instructions in this manual before using this equipment.

## **Table Of Contents**

Important Safety Instructions-----	3
Instructions-----	4
Exploded View and Parts List-----	5
Assembly -----	11
Maintenance Schedule-----	14
General Maintenance Information-----	15

## Important Safety Instructions

Before beginning any fitness program, you should obtain a complete physical examination from your physician. When using exercise equipment, basic precautions should always be taken, including the following:

- \* Read all instructions before using the equipment. These instructions are written to ensure your safety and to protect the unit.
- \* Do not allow children on or near the equipment.
- \* Use the equipment only for its intended purpose as described in this guide. Do not use accessory attachments that are not recommended by the manufacturer: such attachments might cause injuries.
- \* Wear proper exercise clothing and shoes for your workout----no loose clothing.
- \* Be careful when getting on or off the equipment.
- \* Do not overexert yourself or work to exhaustion.
- \* If you feel any pain or abnormal symptoms, stop your workout immediately and consult your physician.
- \* Never operate the unit when it has been dropped or damaged.
- \* Never drop or insert anything into any opening in the equipment.
- \* Always check the unit and its cables before each use. Make sure that all fasteners and cables are secure and in good working condition.
- \* Frayed or worn cables can be dangerous and may cause injury. Periodically check these cables for any indication of wear.
- \* Keep hands, limbs, loose clothing and long hair well out of the way of moving parts.
- \* Do not attempt to lift more weight than you can control safely.
- \* Do not use the equipment outdoors.

### PERSONAL SAFETY DURING ASSEMBLY

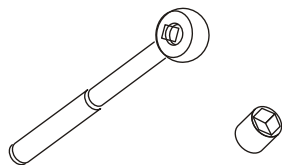
- \* Read each step in the assembly instructions and follow the steps in sequence. Do not skip ahead. If you skip ahead, you may learn later that you have to disassemble components and that you may have damaged the equipment.
- \* Assemble and operate the equipment on a solid, level surface. Locate the unit a few feet from walls or furniture to provide easy access. The equipment is designed for your enjoyment. By following these precautions and using common sense, you will have many safe and pleasurable hours of healthful exercise with the equipment.

## Instructions

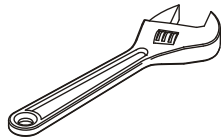
Before beginning assembly please take the time to read instructions thoroughly. Please use the various lists in this manual to make sure that all parts have been included in your shipment. When ordering, use part number and description from the lists. Use only our replacement part when servicing. Failure to do so will void your warranty and could result in personal injury.

The equipment is designed to provide the smoothest, most effective exercise motion possible. After assembly, you should check all functions to ensure correct operation. If you experience problems, first recheck the assembly instructions to locate any possible errors made during assembly. If you are unable to correct the problem, call your authorized dealer. Be sure to have your serial number and this manual when calling. When all parts have been accounted for, continue on.

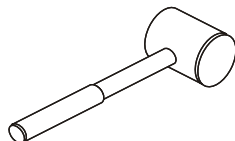
## Tools Required



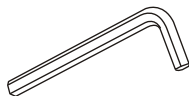
Ratchet Wrench and Socket



Adjustable Wrench



Rubber Mallet

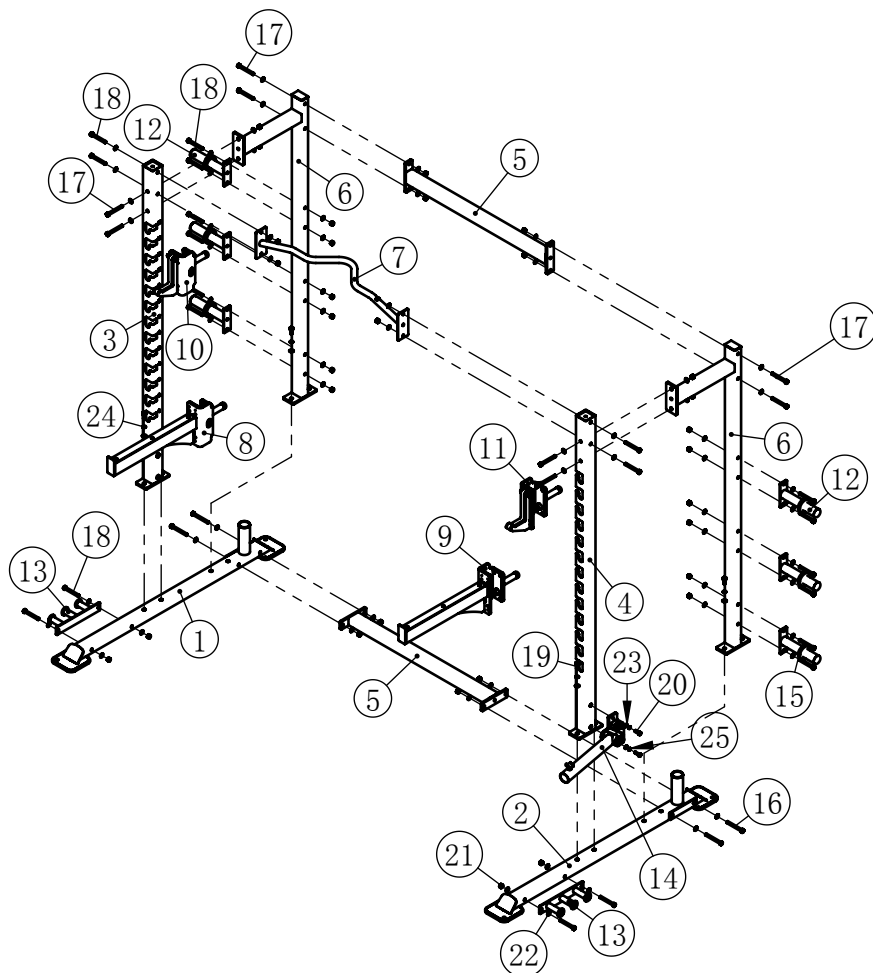


Hex Key Wrench Set

# Exploded View and Parts List

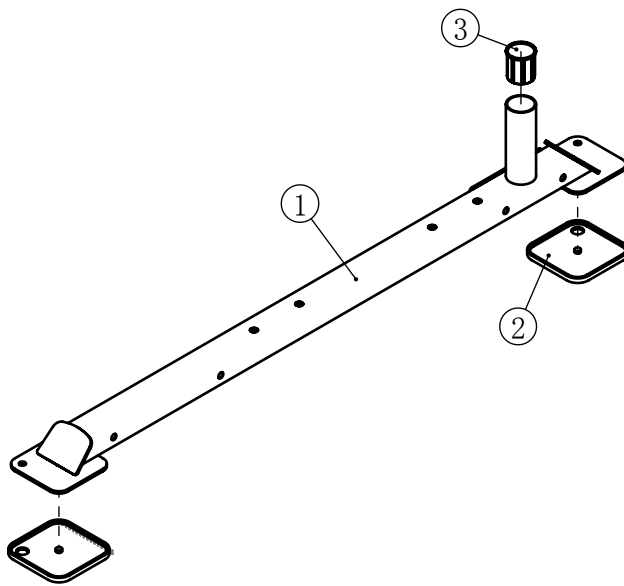
overall

ITEM NO.	DESCRIPTION	QTY	ITEM NO.	DESCRIPTION	QTY
1	Base Frame I ASSY	1	14	Battery Base ASSY	1
2	Base Frame II ASSY	1	15	Bumper	6
3	Front Standing Frame I	1	16	Hex Head Bolt M12*110	4
4	Front Standing Frame II	1	17	Hex Head Bolt M12*105	8
5	Bottom Cross Frame	2	18	Hex Head Bolt M12*100	20
6	Rear Upright Frame ASSY	2	19	Hex Head Bolt M12*30	8
7	Lat Bar	1	20	Hex Head Bolt M10*30	2
8	Carriage I ASSY	1	21	Nylon Lock Nut M12	32
9	Carriage II ASSY	1	22	Flat Washer $\phi 13*\phi 24*1.5$	72
10	Weight Hook I ASSY	1	23	Flat Washer $\phi 11*\phi 20*2$	2
11	Weight Hook II ASSY	1	24	Spring Washer $\phi 12$	8
12	Rear Weight Storage ASSY	6	25	Spring Washer $\phi 10$	2
13	Strap Hook ASSY	2			



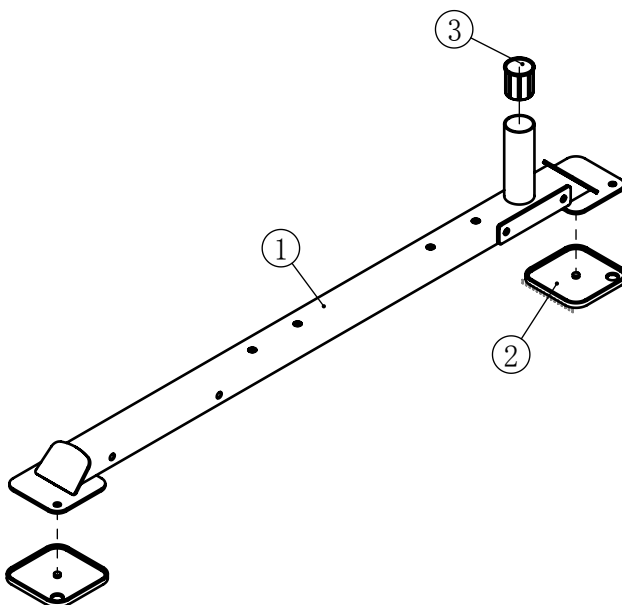
## Exploded View and Parts List

### Base Frame ASSY



ITEM NO.	DESCRIPTION	QTY
1	Base Frame I	1
2	Rubber Foot	2
3	Bushing $\phi 60*\phi 51.5*63.5$	1

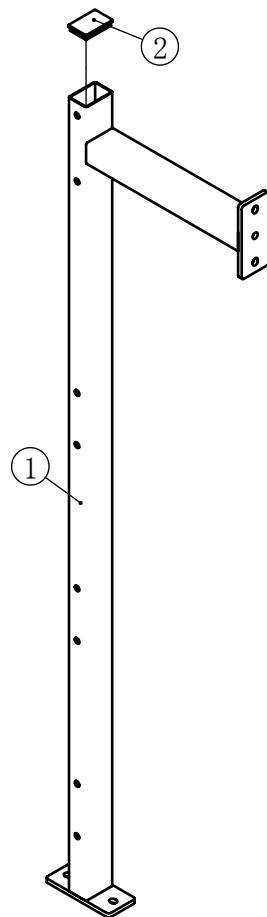
### Base Frame ASSY



ITEM NO.	DESCRIPTION	QTY
1	Base Frame II	1
2	Rubber Foot	2
3	Bushing $\phi 60*\phi 51.5*63.5$	1

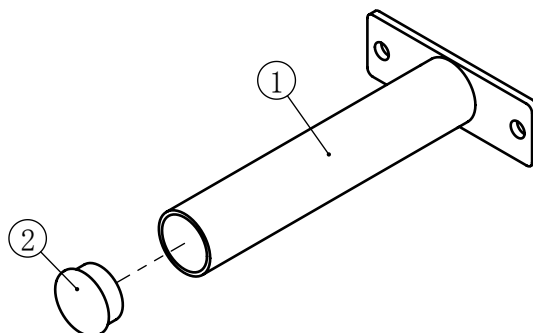
## Exploded View and Parts List

### Rear Upright Frame ASSY



ITEM NO.	DESCRIPTION	QTY
1	Rear Upright Frame	1
2	Plug □50.8*76.2	1

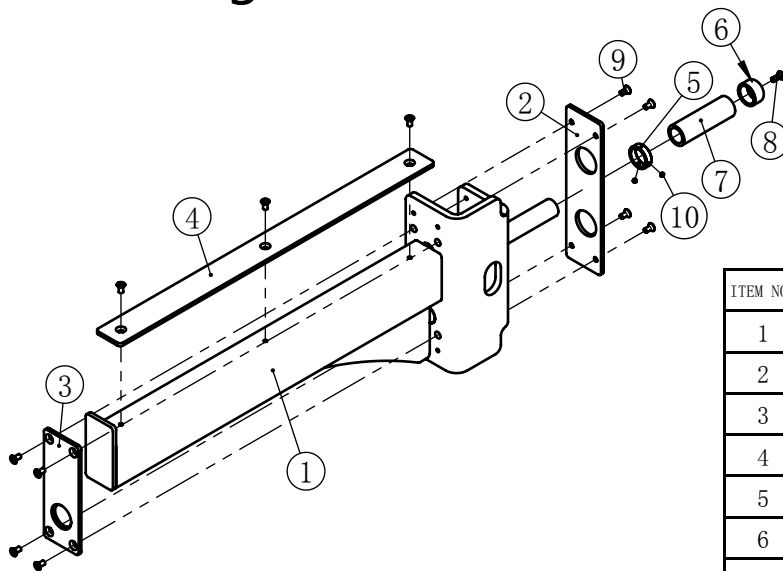
### Rear Weight Storage ASSY



ITEM NO.	DESCRIPTION	QTY
1	Rear Weight Storage	1
2	Plug $\varnothing$ 48	1

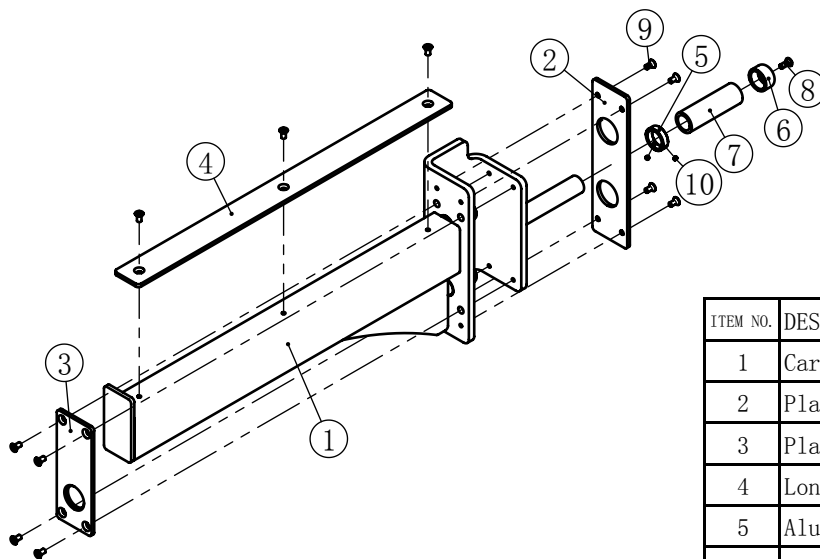
## Exploded View and Parts List

### Carriage ASSY



ITEM NO.	DESCRIPTION	QTY
1	Carriage I	1
2	Plastic Plate I	1
3	Plastic Plate II	1
4	Long Plastic Plate	1
5	Aluminum Ring $\phi$ 25	1
6	Aluminum Cap $\phi$ 25	1
7	Grip $\phi$ 30* $\phi$ 22*95	1
8	Button Head Cap Screw M6*16	1
9	Flat Head Cap Screw M6*12	11
10	Socket Set Screw M5*3	2

### Carriage ASSY

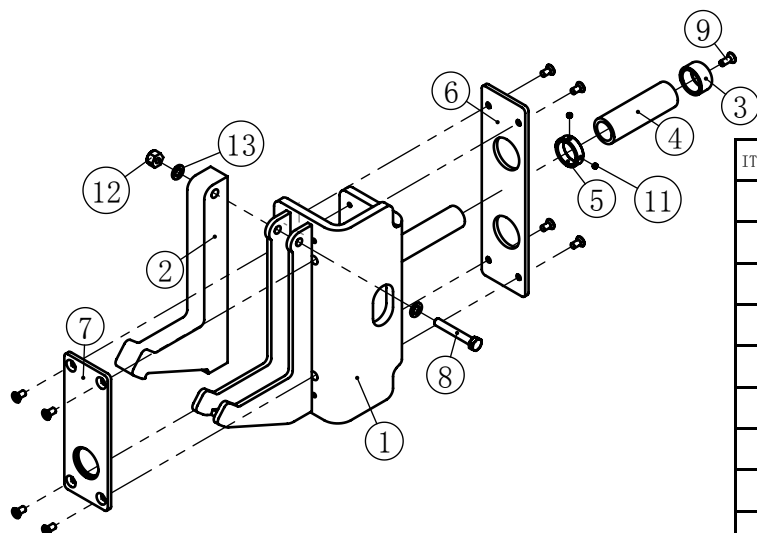


ITEM NO.	DESCRIPTION	QTY
1	Carriage II	1
2	Plastic Plate I	1
3	Plastic Plate II	1
4	Long Plastic Plate	1
5	Aluminum Ring $\phi$ 25	1
6	Aluminum Cap $\phi$ 25	1
7	Grip $\phi$ 30* $\phi$ 22*95	1
8	Button Head Cap Screw M6*16	1
9	Flat Head Cap Screw M6*12	11
10	Socket Set Screw M5*3	2



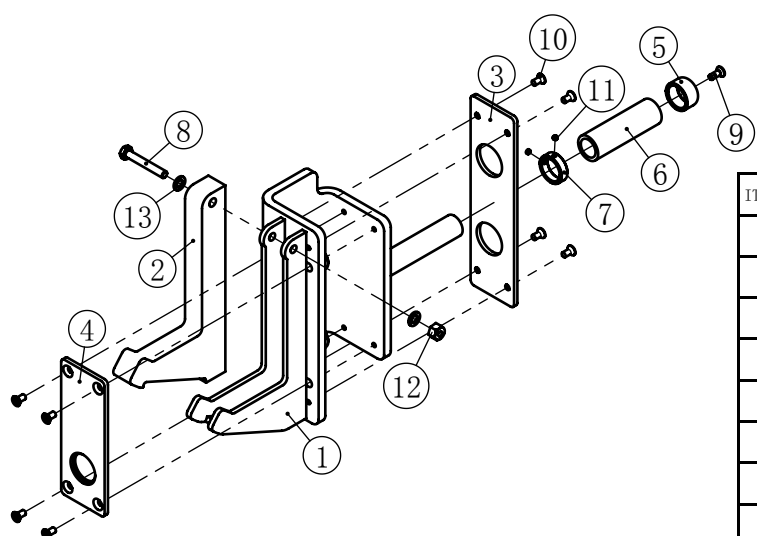
## Exploded View and Parts List

### Weight Hook ASSY



ITEM NO.	DESCRIPTION	QTY
1	Weight Hook I	1
2	Hook	1
3	Aluminum Cap $\phi$ 25	1
4	Grip $\phi$ 30* $\phi$ 22*95	1
5	Aluminum Ring $\phi$ 25	1
6	Plastic Plate I	1
7	Plastic Plate II	1
8	Hex Head Bolt M8*55	1
9	Button Head Cap Screw M6*16	1
10	Flat Head Cap Screw M6*12	8
11	Socket Set Screw M5*3	2
12	Nylon Lock Nut M8	1
13	Flat Washer $\phi$ 9* $\phi$ 16*1.6	2

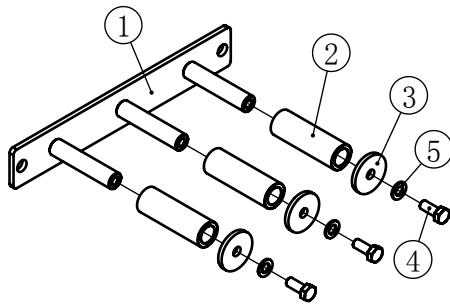
### Weight Hook ASSY



ITEM NO.	DESCRIPTION	QTY
1	Weight Hook II	1
2	Hook	1
3	Plastic Plate I	1
4	Plastic Plate II	1
5	Aluminum Cap $\phi$ 25	1
6	Grip $\phi$ 30* $\phi$ 22*95	1
7	Aluminum Ring $\phi$ 25	1
8	Hex Head Bolt M8*55	1
9	Button Head Cap Screw M6*16	1
10	Flat Head Cap Screw M6*12	8
11	Socket Set Screw M5*3	2
12	Nylon Lock Nut M8	1
13	Flat Washer $\phi$ 9* $\phi$ 16*1.6	2

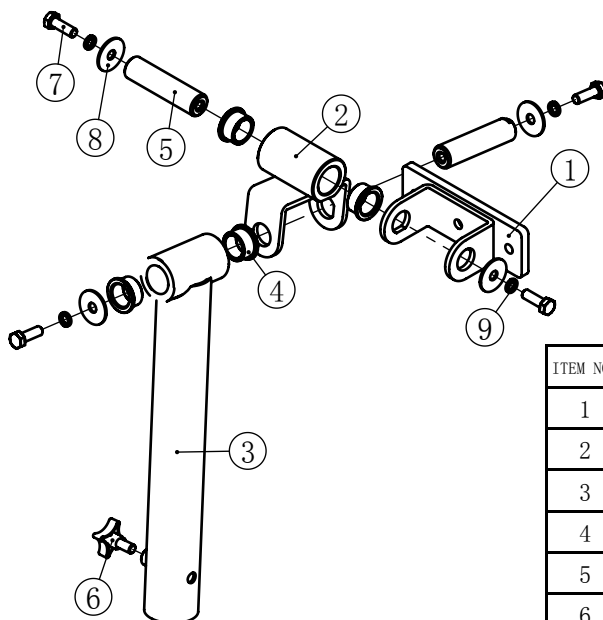
## Exploded View and Parts List

### Strap Hook ASSY



ITEM NO.	DESCRIPTION	QTY
1	Strap Hook	1
2	Sleeve $\phi 30*\phi 20*91$	3
3	End Cover	3
4	Hex Head Bolt M10*25	3
5	Flat Washer $\phi 11*\phi 20*2$	3

### Battery Base ASSY

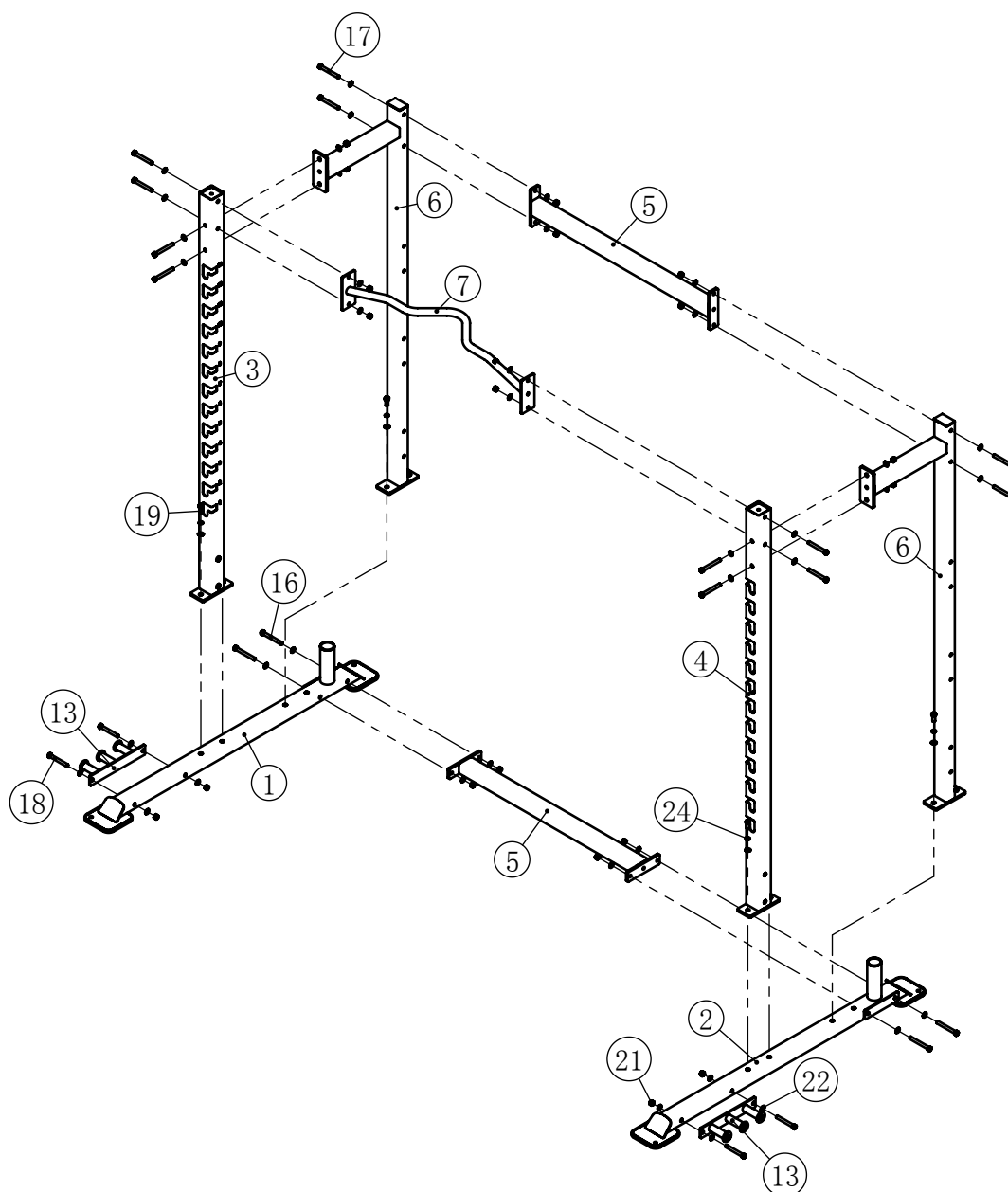


ITEM NO.	DESCRIPTION	QTY
1	Fixing Frame	1
2	Rotating Frame	1
3	Turret Mounting Bracket	1
4	Bronze Bearing $\phi 38*\phi 25.4*18$	4
5	Pivot $\phi 25.4*102$	2
6	Adjusting Handle	1
7	Hex Head Bolt M10*30	4
8	Flat Washer $\phi 11*\phi 20*2$	4
9	Spring Washer $\phi 10$	4

# Assembly

## STEP 1

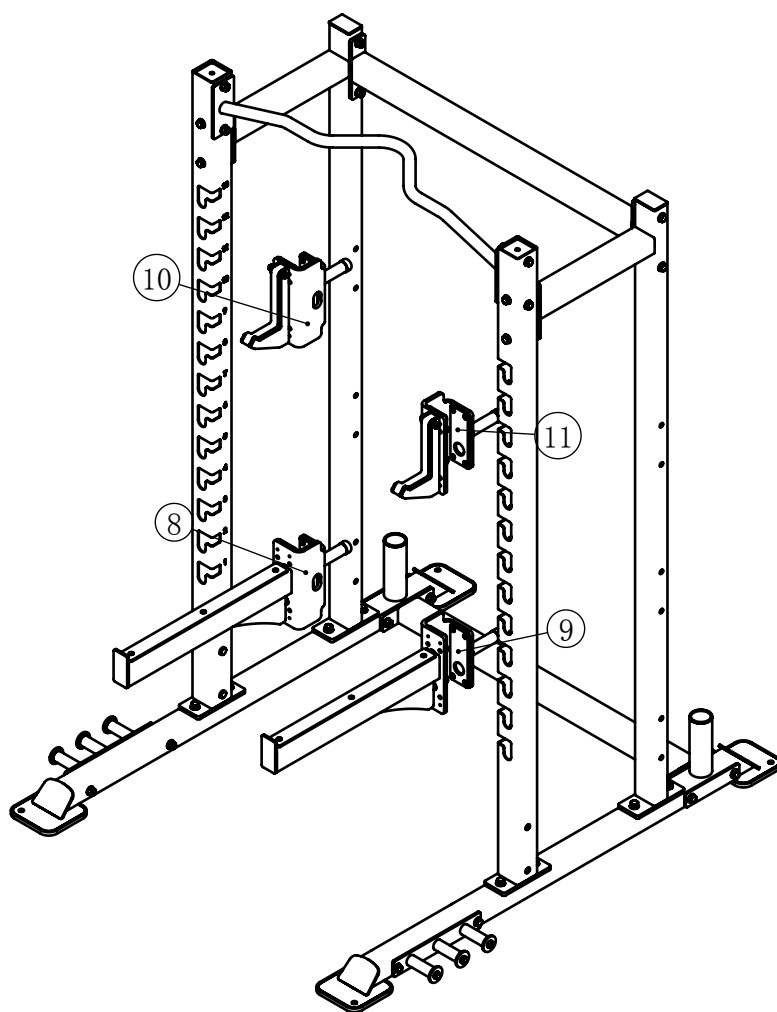
ITEM NO.	DESCRIPTION	QTY	ITEM NO.	DESCRIPTION	QTY
1	Base Frame I ASSY	1	16	Hex Head Bolt M12*110	4
2	Base Frame II ASSY	1	17	Hex Head Bolt M12*105	8
3	Front Standing Frame I	1	18	Hex Head Bolt M12*100	8
4	Front Standing Frame II	1	19	Hex Head Bolt M12*30	8
5	Bottom Cross Frame	2	21	Nylon Lock Nut M12	20
6	Rear Upright Frame ASSY	2	22	Flat Washer $\phi 13*\phi 24*1.5$	48
7	Lat Bar	1	24	Spring Washer $\phi 12$	8
13	Strap Hook ASSY	2			



# Assembly

## STEP 2

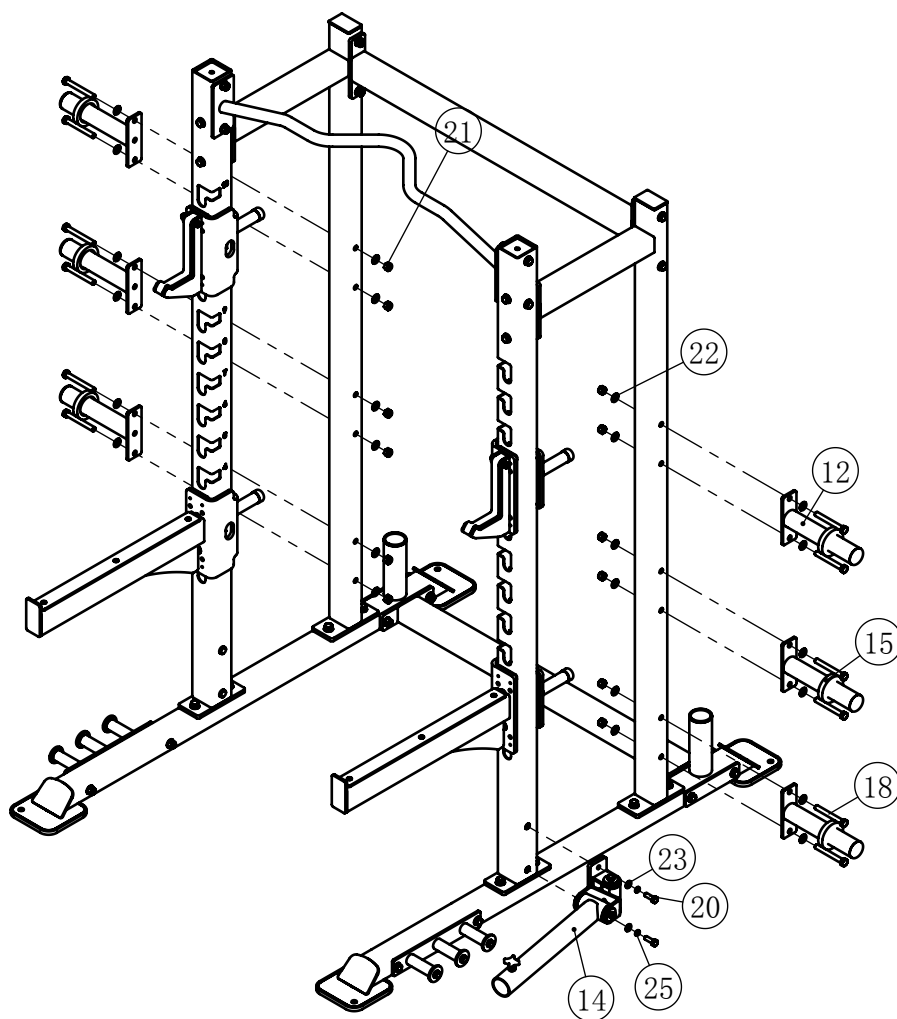
ITEM NO.	DESCRIPTION	QTY	ITEM NO.	DESCRIPTION	QTY
8	Carriage I ASSY	1	10	Weight Hook I ASSY	1
9	Carriage II ASSY	1	11	Weight Hook II ASSY	1



# Assembly

## STEP 2

ITEM NO.	DESCRIPTION	QTY	ITEM NO.	DESCRIPTION	QTY
12	Rear Weight Storage ASSY	6	21	Nylon Lock Nut M12	12
14	Battery Base ASSY	1	22	Flat Washer $\phi$ 13* $\phi$ 24*1.5	24
15	Bumper	6	23	Flat Washer $\phi$ 11* $\phi$ 20*2	2
18	Hex Head Bolt M12*100	12	25	Spring Washer $\phi$ 10	2
20	Hex Head Bolt M10*30	2			



## Maintenance Schedule

ROUTINE	COMMERCIAL MAINTENANCE	HOME MAINTENANCE	LATEST DATE ENTRY					
Inspect; Links, Pull Pins, Snap Locks, Swivels, Weight Stack Pins	DAILY	WEEKLY						
Clean; Upholstery	DAILY	WEEKLY						
Inspect; Cables or Belts and their tension	DAILY	WEEKLY						
Inspect; Accessory Bars, and Handles	WEEKLY	3 MONTHS						
Inspect; All Decals	WEEKLY	3 MONTHS						
Inspect; All Nuts and Bolts, Tighten if needed	WEEKLY	3 MONTHS						
Inspect; Anti-Skid Surface	WEEKLY	3 MONTHS						
Clean & Lubricate; Guide Rods with a Teflon (PTFE) based lubricant (Superlube)	MONTHLY	3 MONTHS						
Lubricate; Seat Sleeves, Turcite Bushings, Linear Bearing	MONTHLY	3 MONTHS						
Clean and Wax; All Glossy Finishes	6 MONTHS	YEARLY						
Repack with Grease; Linear Bearings	6 MONTHS	YEARLY						
Replace; Cables, Belts and Connecting Parts	YEARLY	3 YEARS						

*Your equipment comes with a commercial maintenance decal. For personal, in home use, please follow the home maintenance schedule listed above.*

## General Maintenance Information

### **Links, Pull-Pins, Snap Hooks, Swivels, Weight Stack Pins:**

- \* Check all pieces for signs of visible wear or damage.
- \* Check springs in snap hooks and pull-pins for proper tension and alignment.
- \* If the spring sticks or has lost its rigidity, replace it immediately.

### **Upholstery:**

- \* To ensure prolonged upholstery life and proper hygiene, all upholstered pads should be wiped down with a damp cloth after every workout.
- \* Periodically take the time to use a mild soap or an approved vinyl upholstery cleaner to deter the onset of cracking or drying. Avoid using any abrasive cleaners or cleaners not intended for use on vinyl.
- \* Replace ripped or worn upholstery immediately.
- \* Keep sharp or pointed objects clear of all upholstery.

### **Decals:**

- \* Inspect and familiarize yourself with any safety warnings or other user information posted on each decal.

### **Nuts and Bolts:**

- \* Inspect all nuts and bolts for any loosening and tighten if needed.
- \* Go through a re-tightening sequence periodically to ensure that all hardware is tensioned proper.

### **Anti-Skid Surfaces:**

- \* These surfaces are designed to supply secure footing and need to be replaced if they appear worn or become slippery.

### **Belts and Cables:**

- \* We use only high quality belt, and mil-spec cables.
- \* Visually inspect the belts and cables for fraying, cracking, peeling or discoloration.
- \* While the machine is not in use, carefully run your fingers along the belt or cable to feel for thinning or bulging areas.
- \* Replace belts and cables immediately at the first signs of damage or wear. Do not use equipment until belts or cables have been replaced.

### **Belt and Cable Tension:**

- \* Referring to the Owners Manual, when belts or cables are used check all bolts attachments to be sure they are properly attached.
- \* Check slack in cables and re-adjust cable tension if needed.

### **Seat Sleeves, Guide Rods:**

- \* Wipe down adjusting tubes with a dust free rag before applying lubricant.
- \* Lubricate seat sleeves and Guide Rods with a Silicon or Teflon based lubricant spray.

### **Linear Bearings:**

- \* Referring to the Owners Manual carefully disassemble the bearing from its housing and place a finger full of light grease (lithium, super lube, etc.) into the inside of the bearing. Using your finger, press the grease into the ball-bearings and their tracks. repeat until the ball-bearing tracks are full of grease. Insert the shaft back into the bearing and wipe off excess grease.

**PLEASE KEEP THIS FOR YOUR RECORDS**